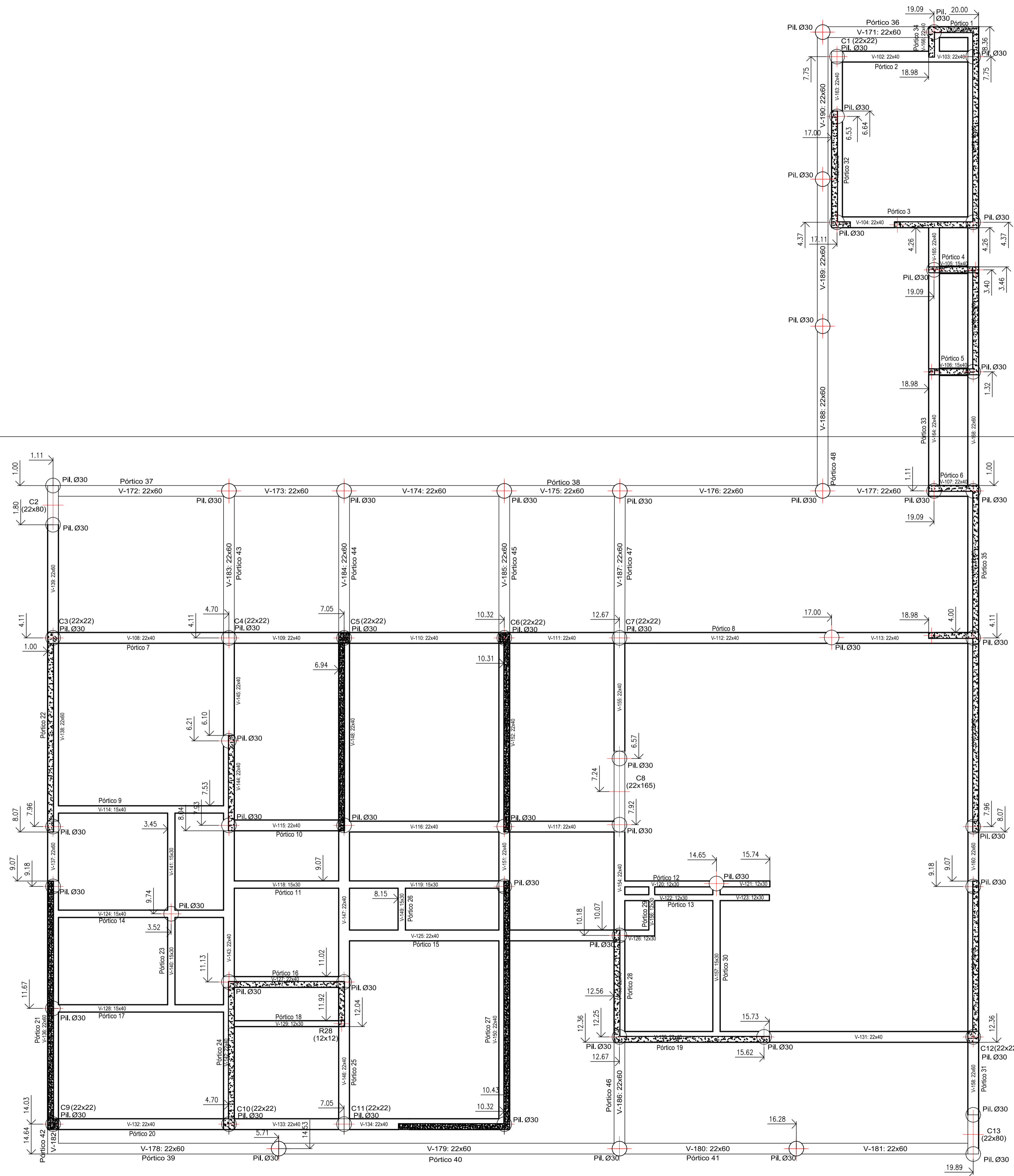


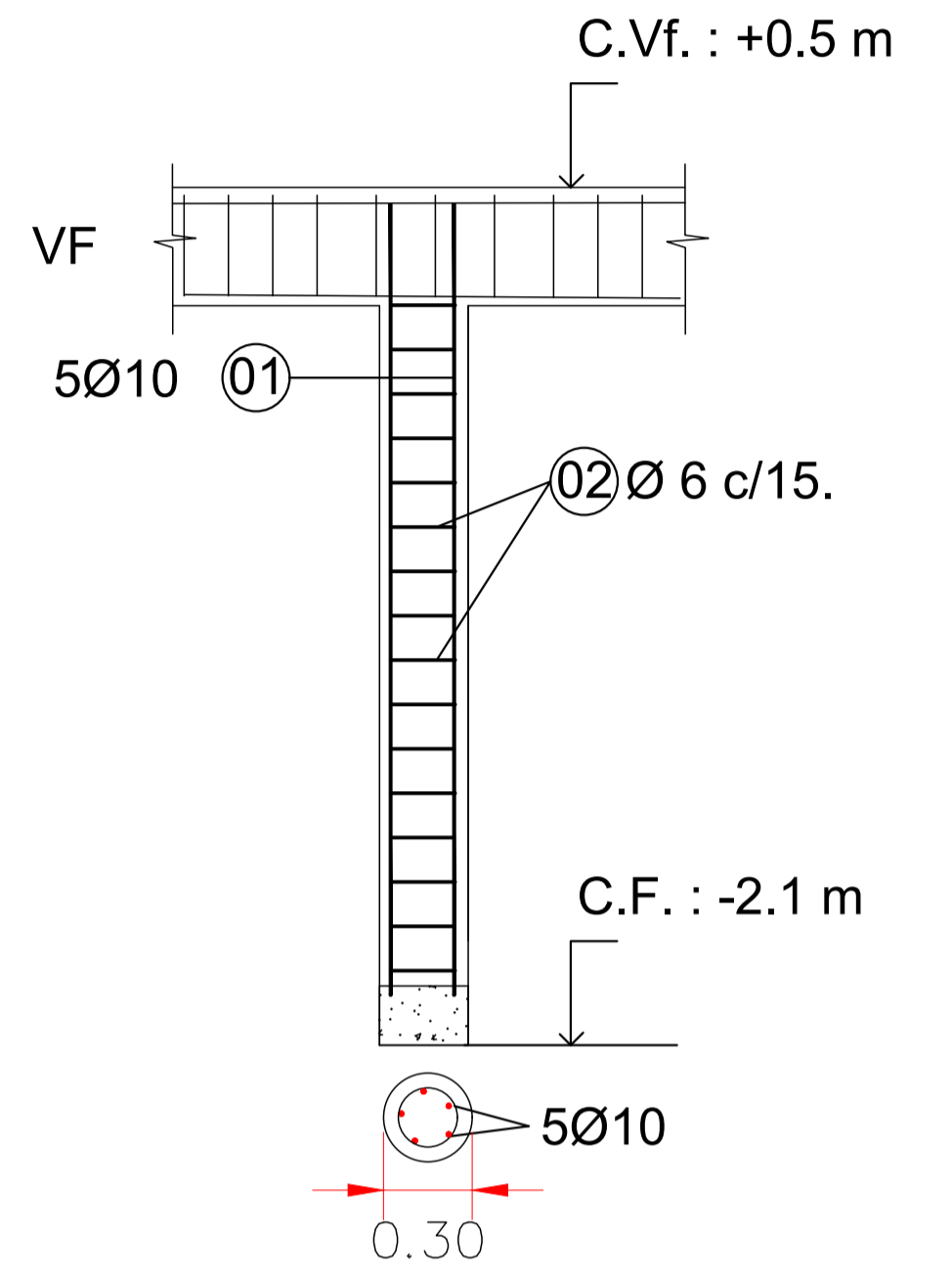
Eje Y

Eje X



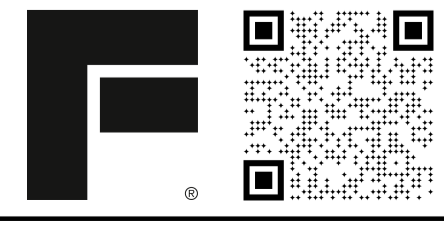
PLANILLA DE DOBLADO DE PILOTINES							Planilla N°	P1
Pos	Diam	Long. Corte	Cantidad			Lon. Pos.	Esquema	
			Elemento	Parcial	Rep			Total
1	10	2,40	Pilotines vertical	5	56	280		
						280	2,4	
2	6	0,79	Pilotines estribos	14	56	784		
						784	Ø=0,22	
Ø 6	Ø 8	Ø 10	Ø 12	Ø 16	Ø 20	Ø 25	DIAMETRO DE BARRA	
620	0	672	0	0	0	0	SUMA DE LONGITUDES [m]	
52	0	56	0	0	0	0	Nº DE BARRAS (l=12 m)	
138	0	415	0	0	0	0	PESO DE MATERIAL [kg]	

DETALLE DE PILOTINES TIPO 5 (Ø=30cm / L=2m) Terminan en Viga de Fund.



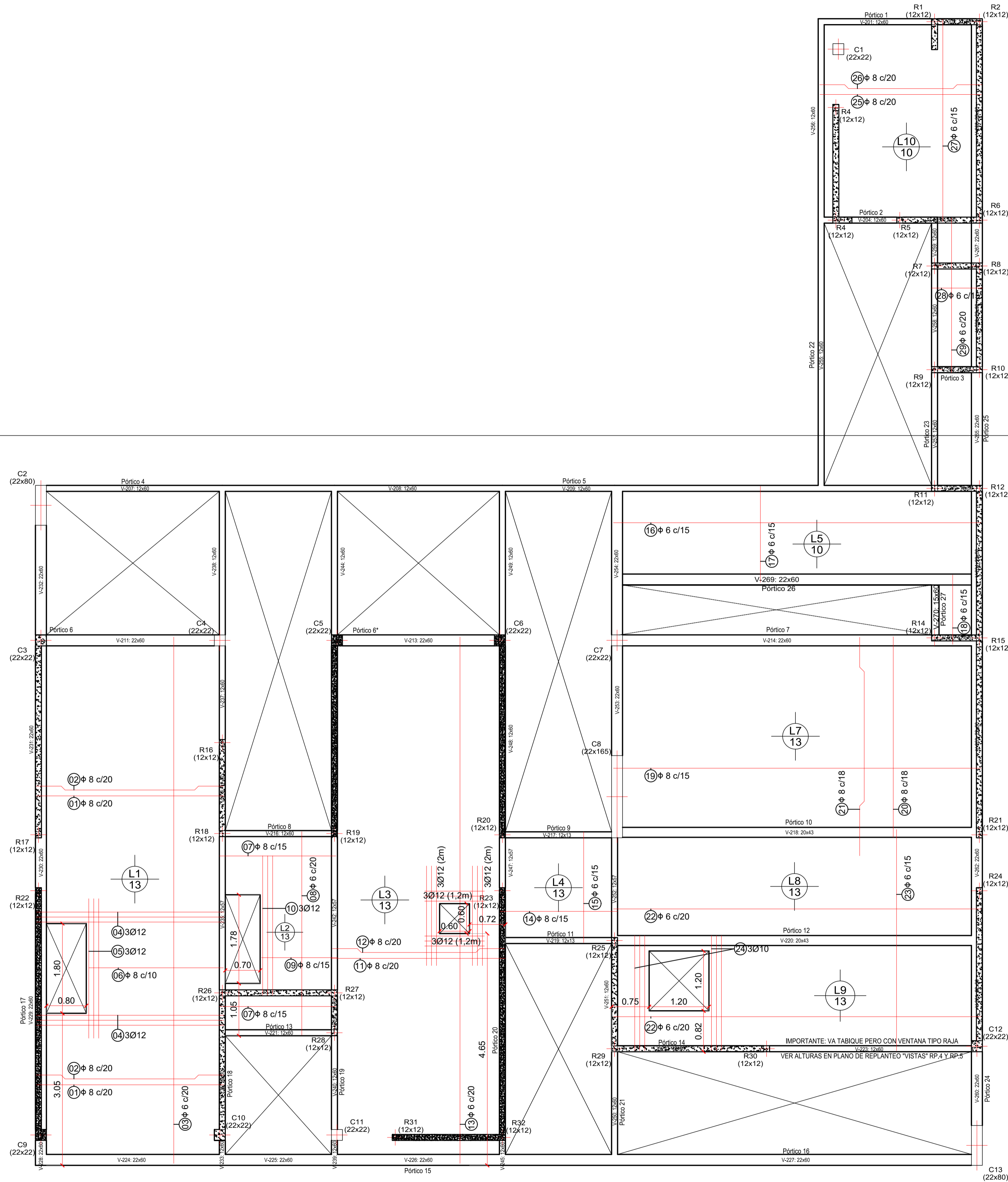
Cómputo de H°	
ELEMENTO	VOLUMEN DE H°
Pilotines	8.0 m³
Vigas de Fund	23.0 m³
Total del nivel	31.0 m³

Materiales:
 Hormigón tipo H21: $f'c = 210 \text{ Kg/cm}^2$
 Acero en barras tipo ADN-420: $f's = 4200 \text{ Kg/cm}^2$
 Recubrimiento libre: FUNDACIONES 5 cm
 EN RESTO 2 cm



Eje Y

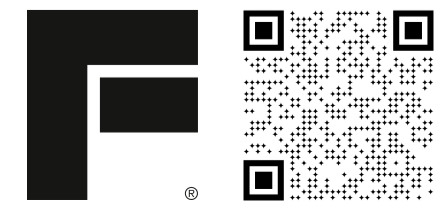
Eje X



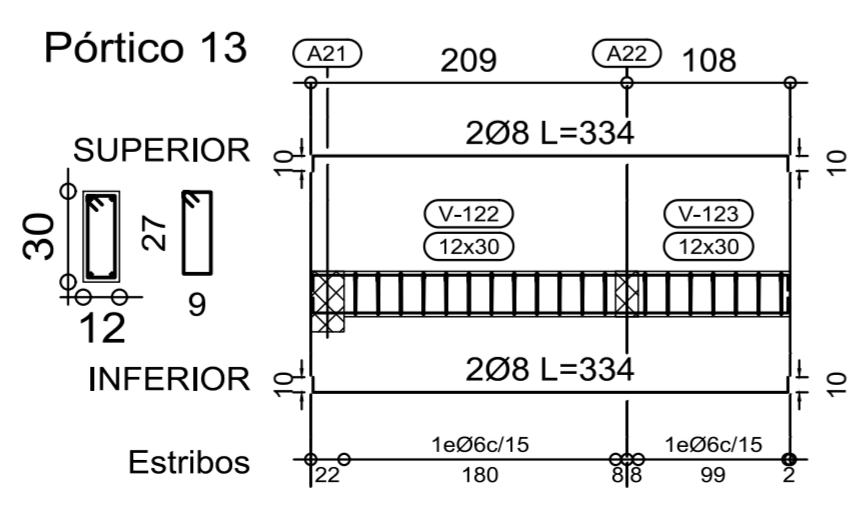
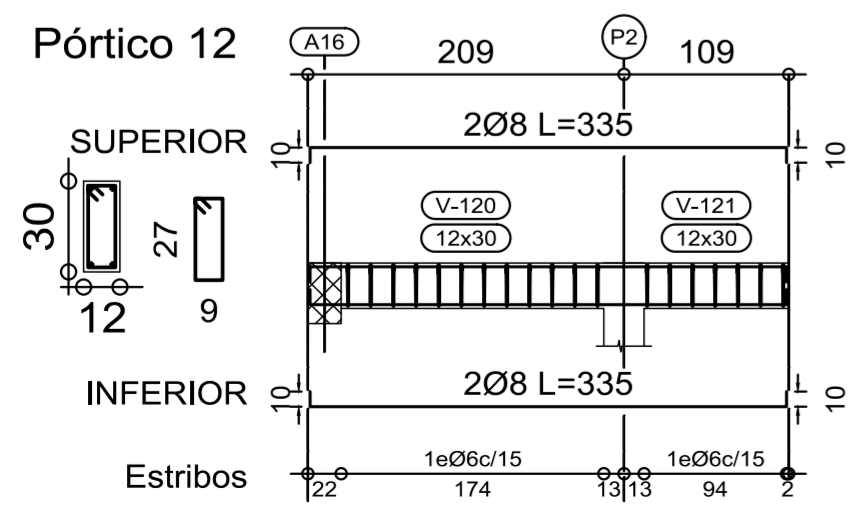
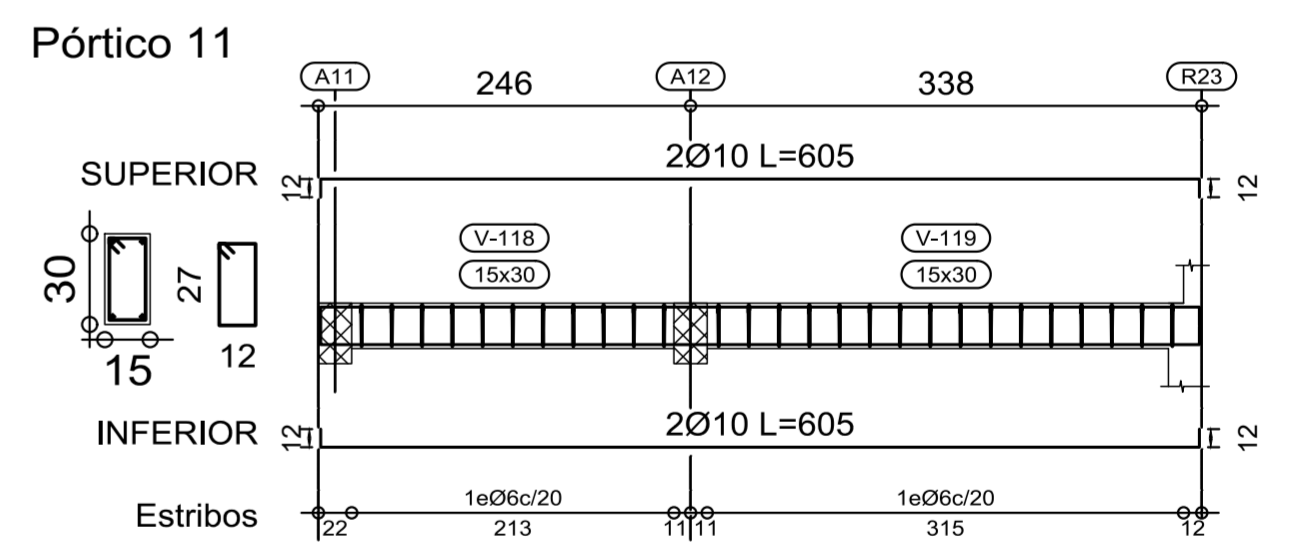
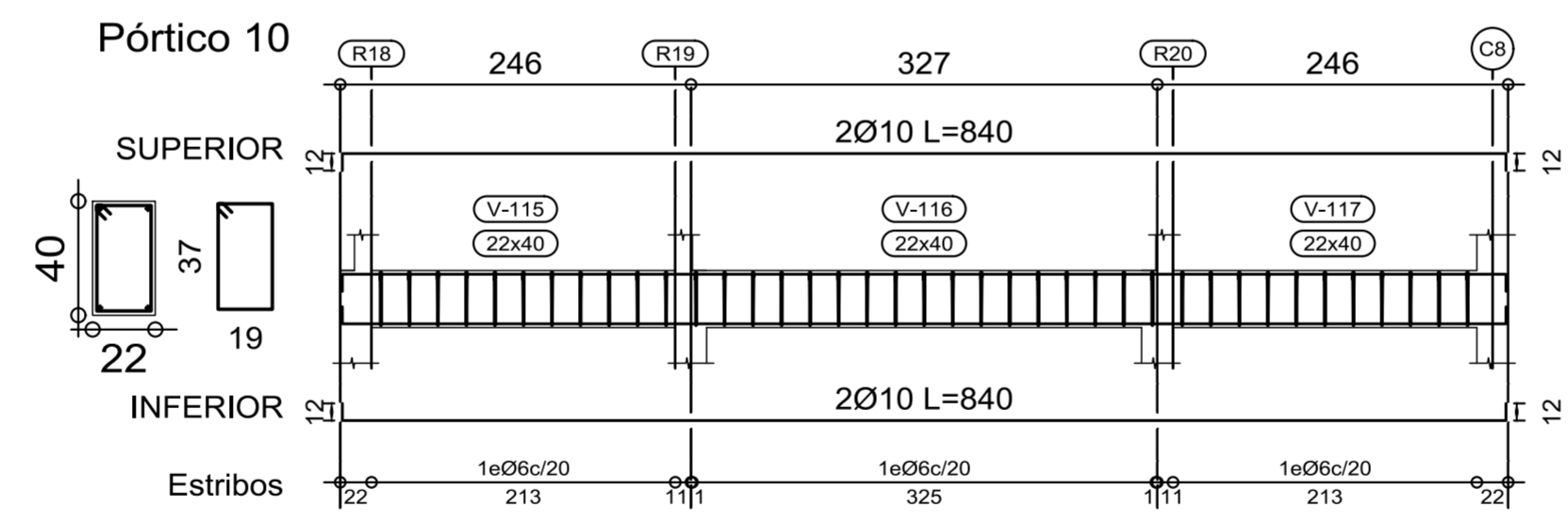
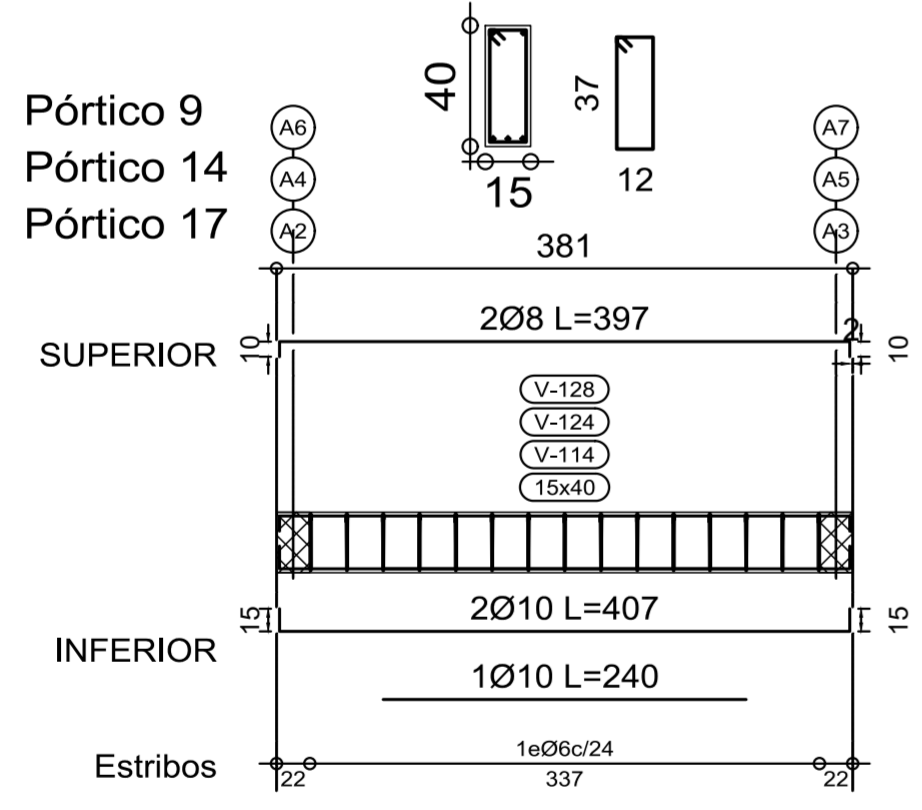
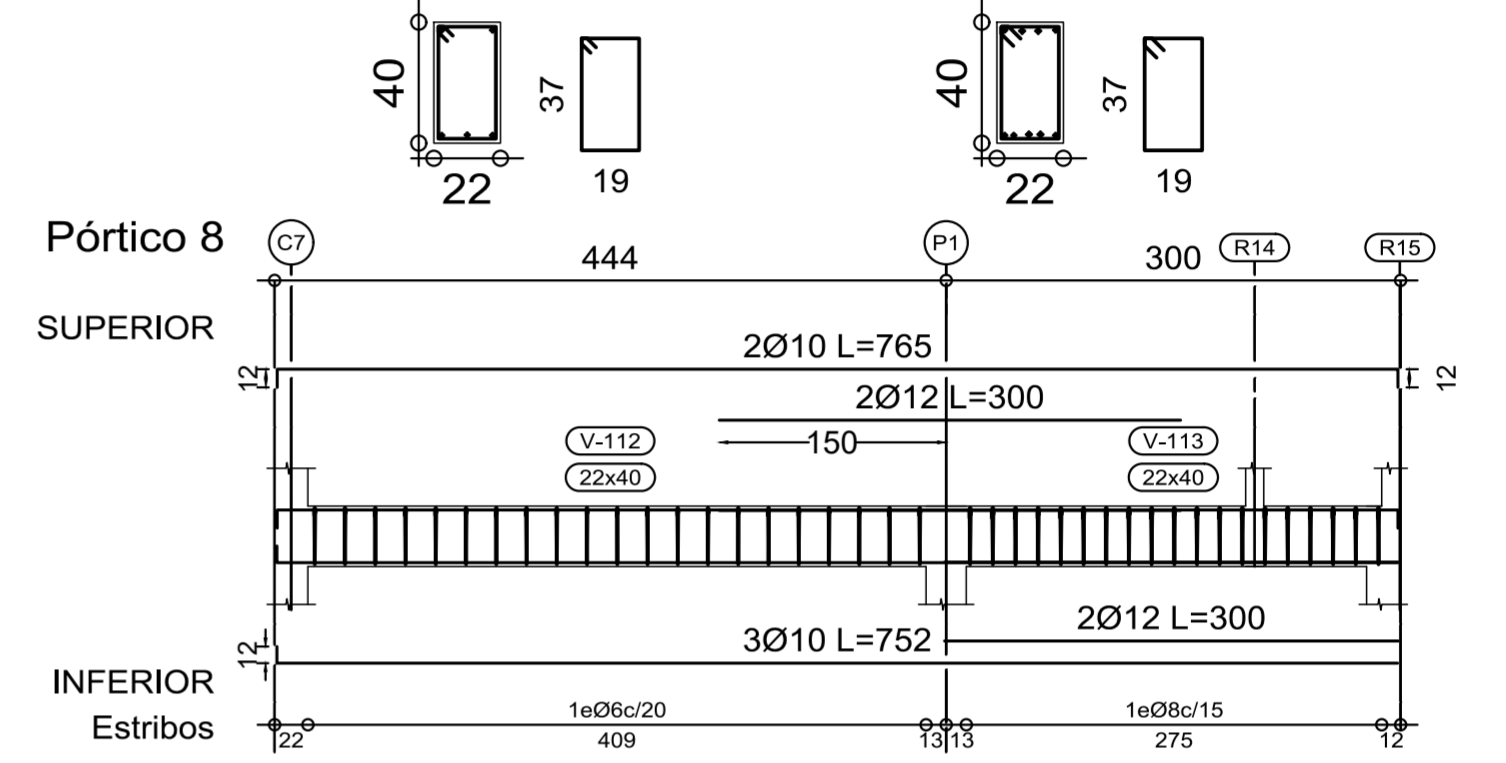
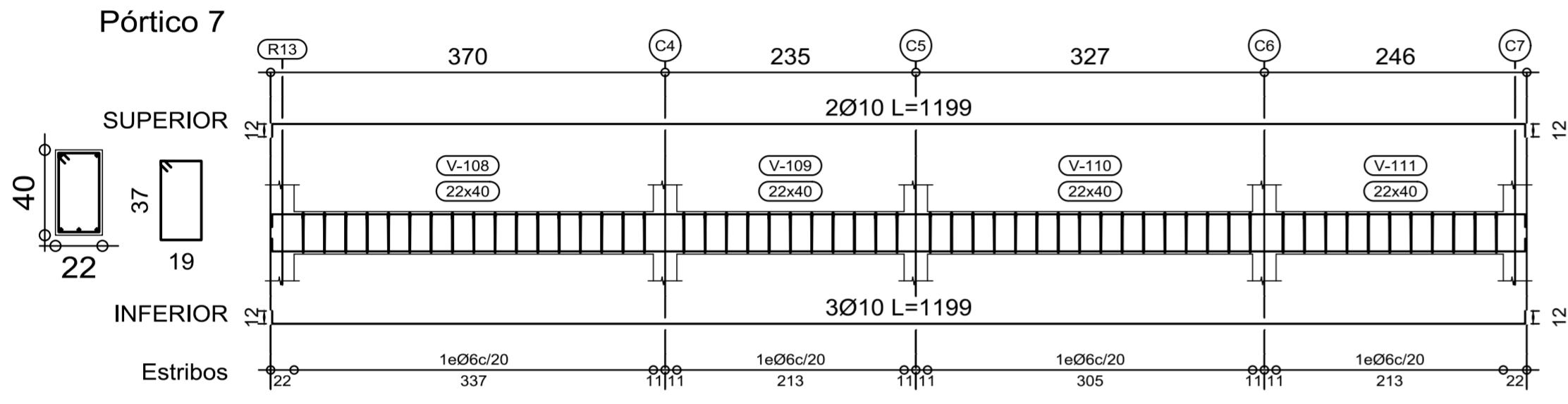
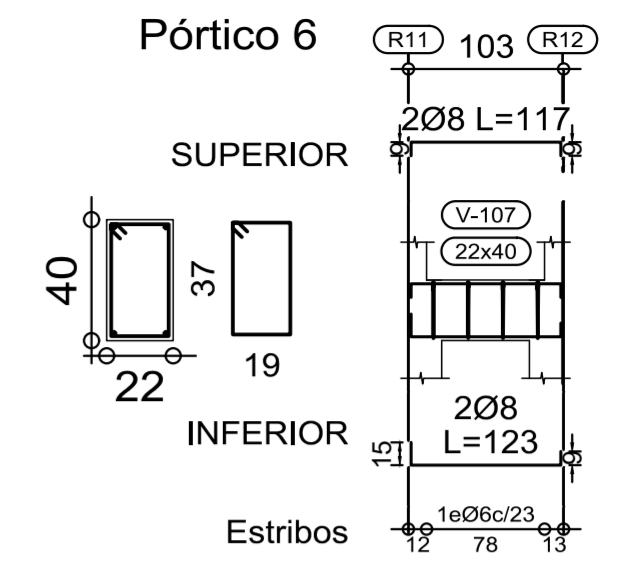
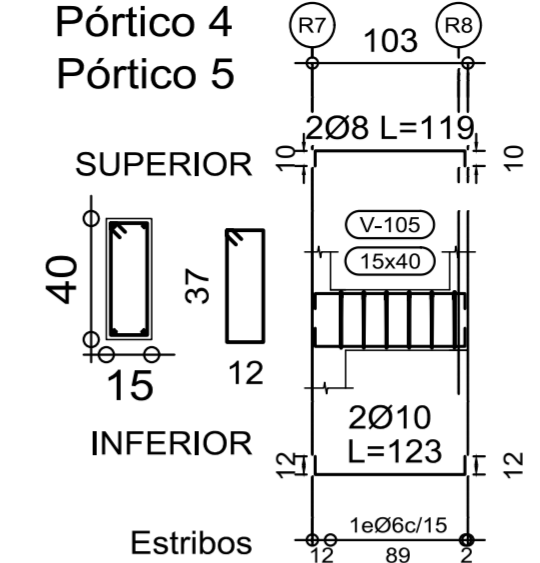
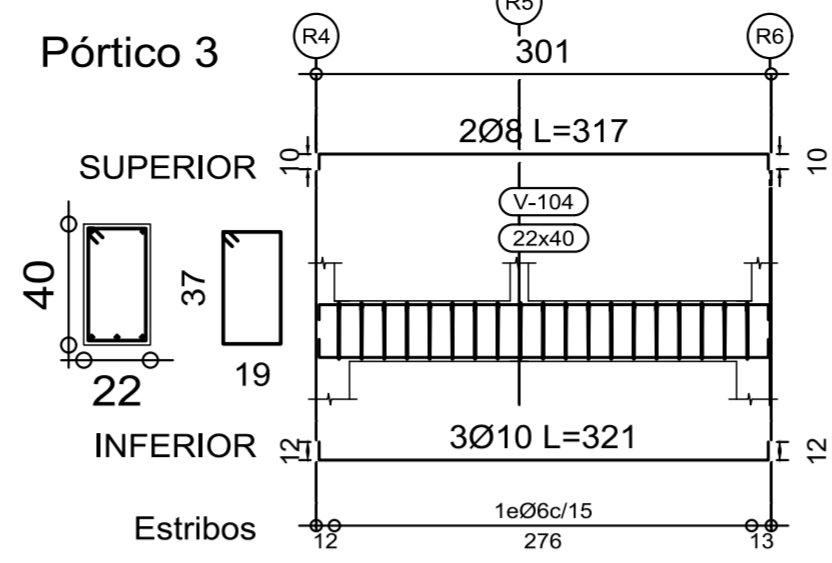
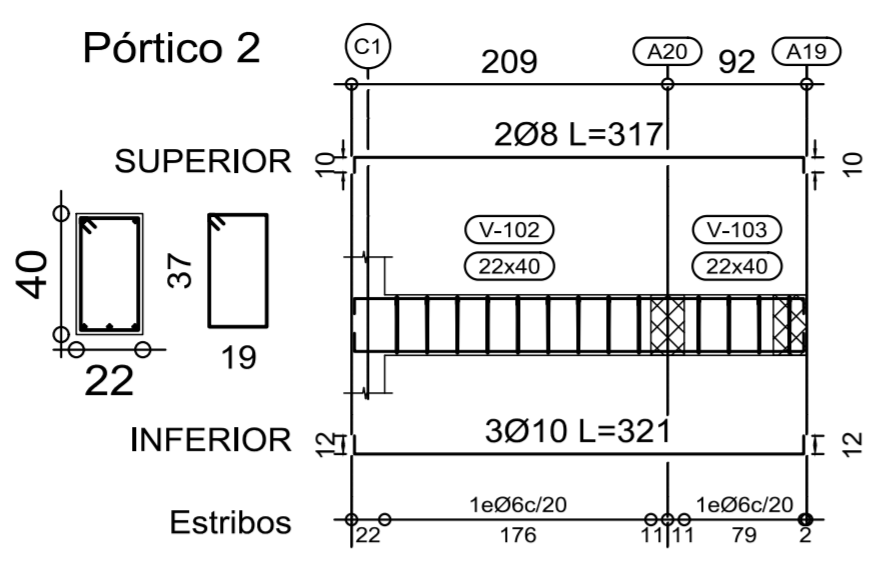
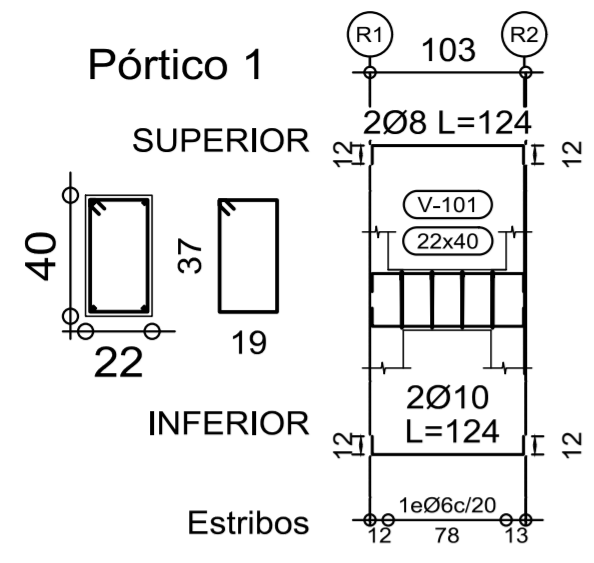
Cómputo de H°	
ELEMENTO	VOLUMEN DE H°
Losas	21 m ⁵
Vigas	19 m ⁵
Columnas / tabiques	23.0 m ³
Total del nivel	63 m⁵

Materiales:
 Hormigón tipo H21: f'c = 210 Kg/cm²
 Acero en barras tipo ADN-420: βs = 4200 Kg/cm²
 Recubrimiento libre: FUNDACIONES 5 cm
 EN RESTO 2 cm

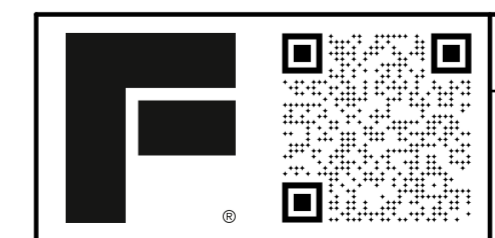
PLANILLA DE DOBLADO							Planilla N°	L1
Pos	Diam	Long. Corte	Cantidad			Lon. Pos.	Esquema	
			Elemento	Parcial	Rep	Total		
1	8	3,75	L1 - x	42	1	42		
			rectas			0		3,75
2	8	3,84	L1 - x	42	1	42		
			Levantadas			0	0,50	0,50
						42	161,28	2,6
3	6	10,55	L1 - y	17	1	17		
			rectas			0		10,55
4	12	3,75	L1 - x	3	2	6		
			Refuerzos			0		Cortar en hueco
						6	22,5	3,75
5	12	3,00	L1 - y	3	1	3		
			Refuerzos			0		3
						3	9	2,7
6	8	2,70	L1 - x	18	1	18		
						0		48,6
7	8	2,37	L2 - x	13	1	13		
						0		2,37
						13	30,81	4,08
8	6	4,08	L2 - y	10	1	10		
			rectas			0		4,08
						10	40,8	Cortar en hueco
9	8	1,50	L2 - x	12	1	12		
						0		1,5
						12	18	3
10	12	2,80	L2 - y	3	1	3		
			Refuerzos			0		3
						3	8,4	3,5
11	8	3,50	L3 - x	51	1	51		
			rectas			0		3,5
						51	178,5	0,50
12	8	3,54	L3 - x	51	1	51		
			Levantadas			0	0,12	0,12
						51	180,54	2,3
13	6	10,56	L3 - y	16	1	16		
			rectas			0		10,56
						16	168,96	2,4
14	8	2,40	L4 - x	14	1	14		
						0		2,4
						14	33,6	2,2
15	6	2,20	L4 - y	14	1	14		
			rectas			0		2,2
						14	30,8	7,38
16	6	7,38	L5 - x	10	1	10		
			rectas			0		7,38
						10	73,8	1,95
17	6	1,95	L5 - y	46	1	46		
			rectas			0		1,95
						46	89,7	1,4
18	6	1,40	L6 - y	5	1	5		
			rectas			0		1,4
						5	7	7,38
19	6	7,38	L7 - x	24	1	24		
			rectas			0		7,38
						24	177,12	4
20	8	4,00	L7 - y	39	1	39		
			rectas			0		4
						39	156	1,20
21	8	4,64	L7 - y	39	1	39		
			Levantadas			0	0,12	0,12
						39	180,96	2,6
22	6	7,38	L8 - L9 - x	20	1	20		
			rectas			0		7,38
						20	147,6	cutar en hueco
23	6	4,40	L8 - L9 - y	35	1	35		
			rectas			0		4,4
						35	154	cutar en hueco
24	10	2,30	L9 - y	3	2	6		
			Refuerzos			0		2,3
						6	13,8	3,24
25	8	3,24	L10 - x	20	0	0		
			rectas			0		3,24
26	8	3,34	L10 - x	20	1	20		
			Levantadas			0	0,50	0,50
						20	66,8	2,1
27	6	4,00	L10 - y	18	1	18		
			rectas			0		4
						18	72	1
28	6	1,00	L10 - x	18	1	18		
			rectas			0		1,00
						18	18	3,1
29	6	3,10	L10 - y	4	1	4		
			rectas			0		3,1
						4	12,4	
φ 6	φ 8	φ 10	φ 12	φ 16	φ 20	φ 25	DIAMETRO DE BARRA	
1172	1213	14	40	0	0	0	SUMA DE LONGITUDES [m]	
98	101	1	3	0	0	0	N° DE BARRAS (l=12 m)	
260	479	9	35	0	0	0	PESO DE MATERIAL [kg]	

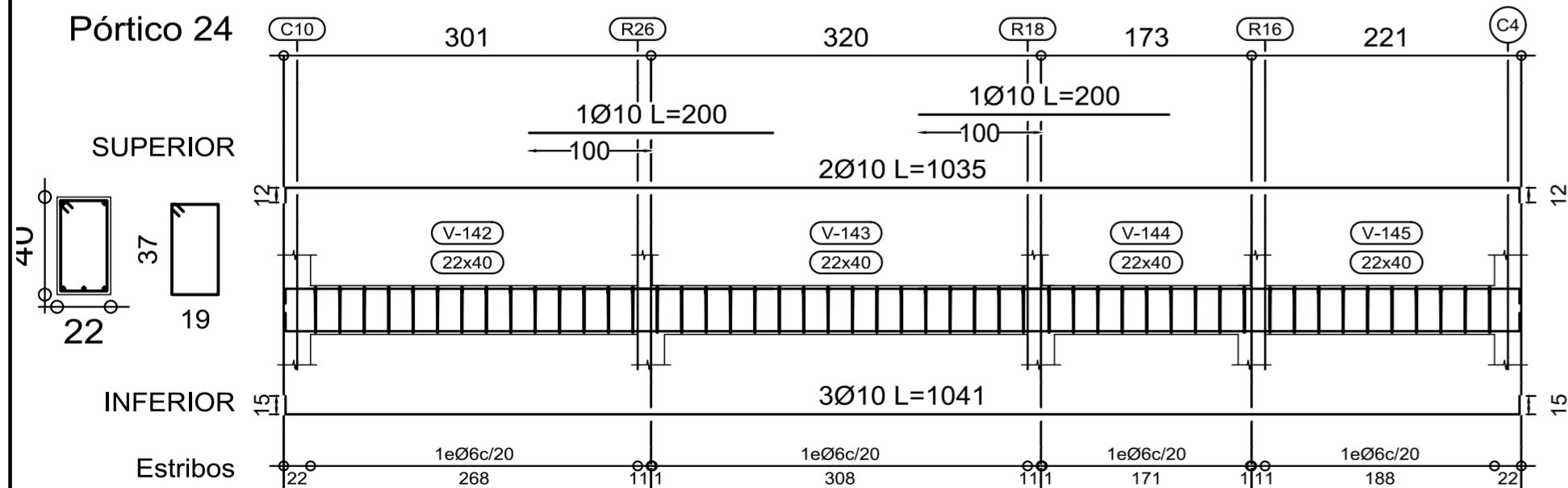
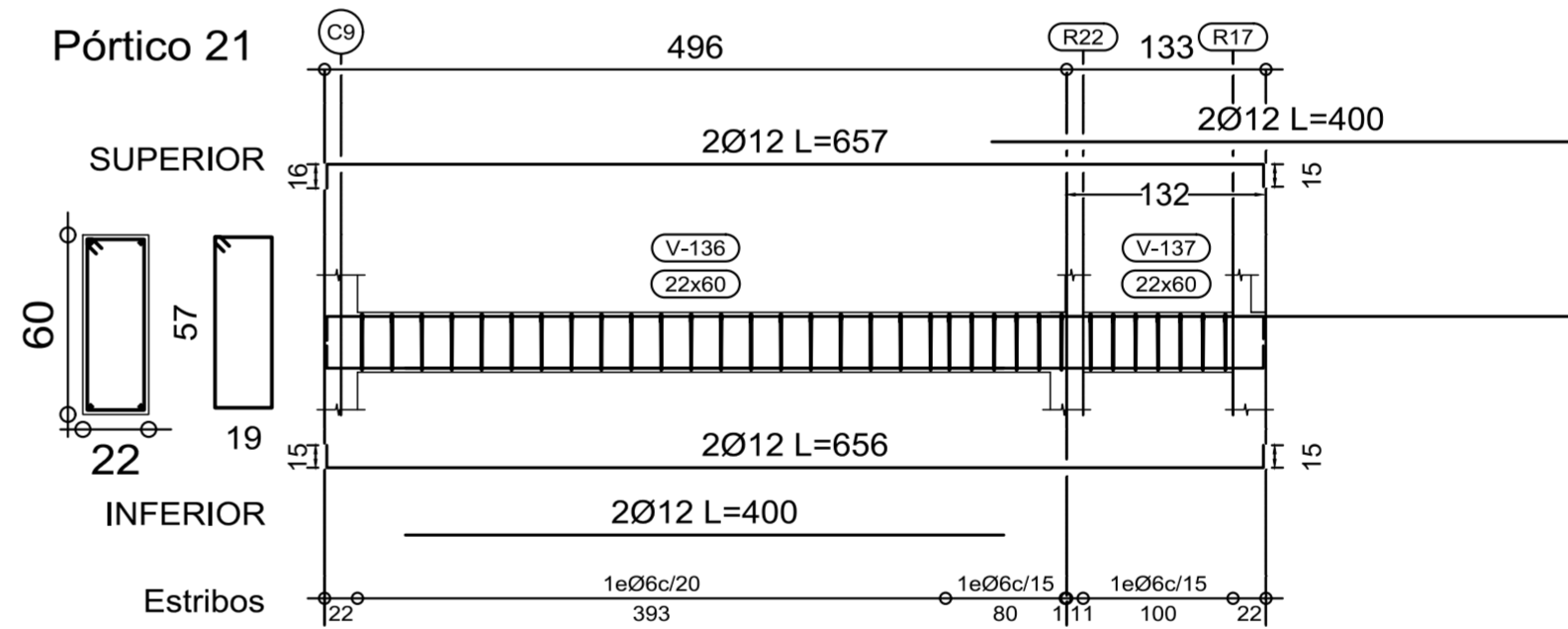
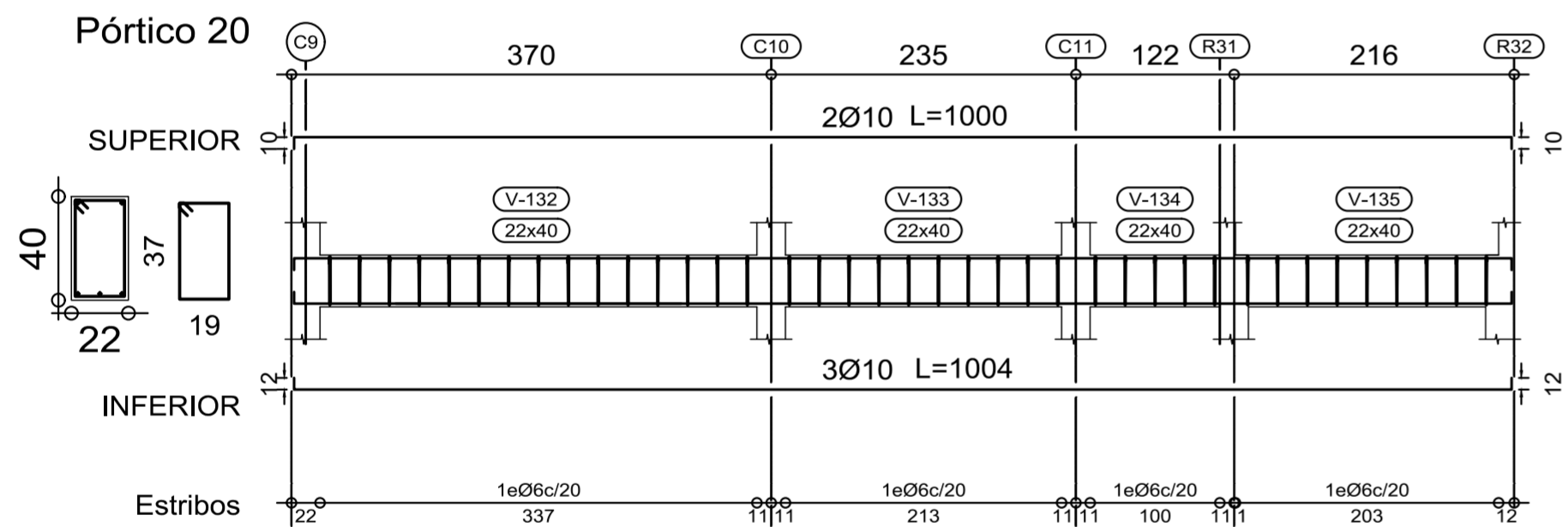
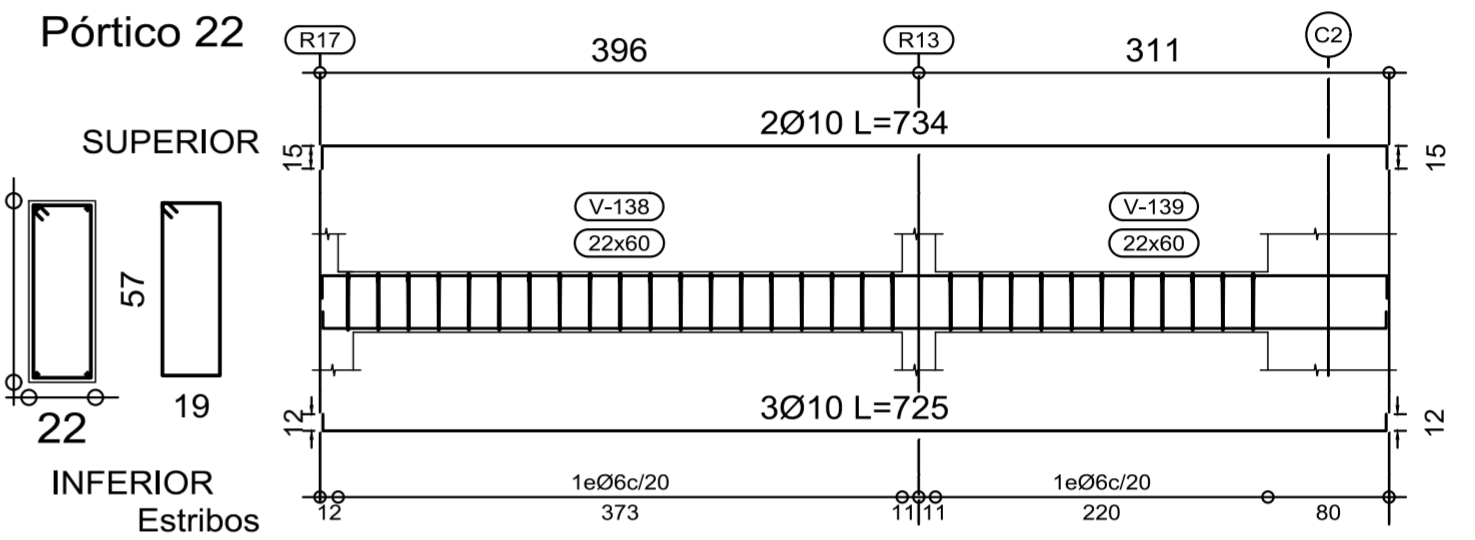
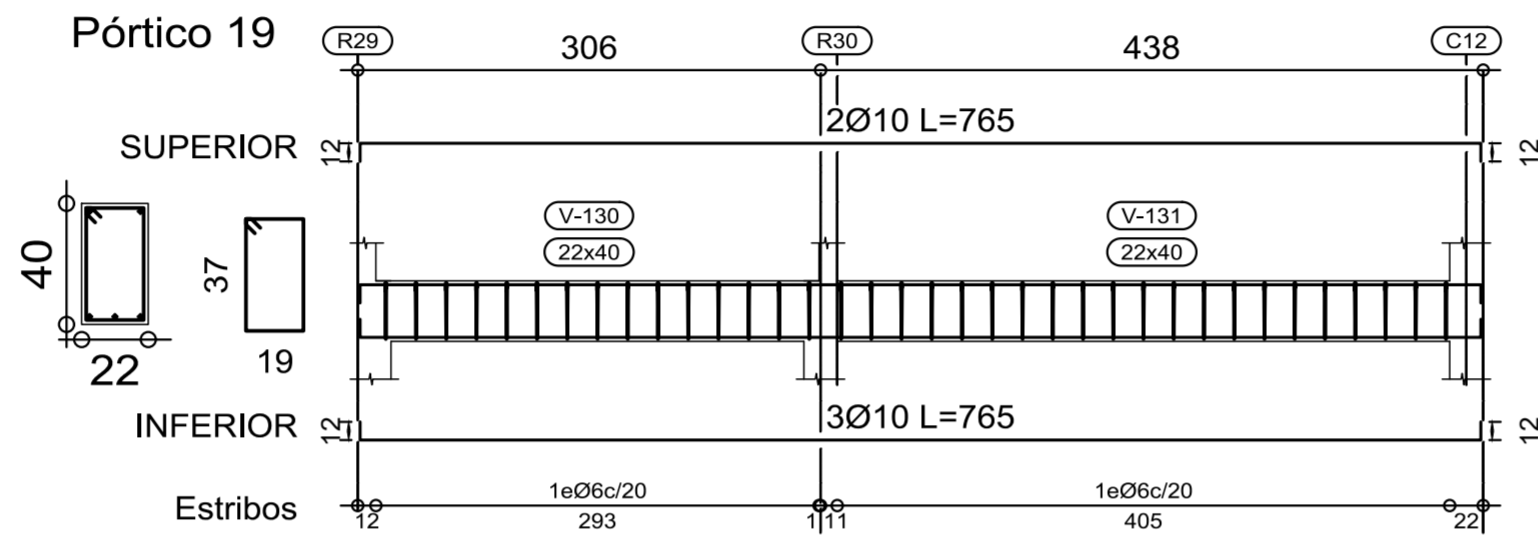
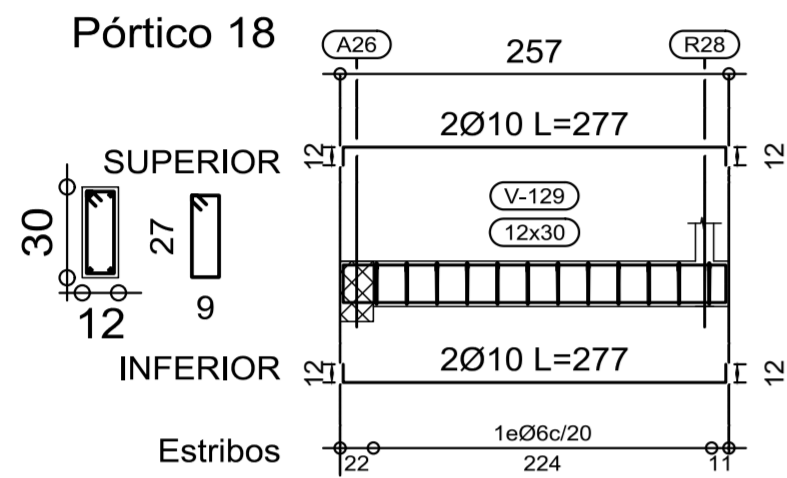
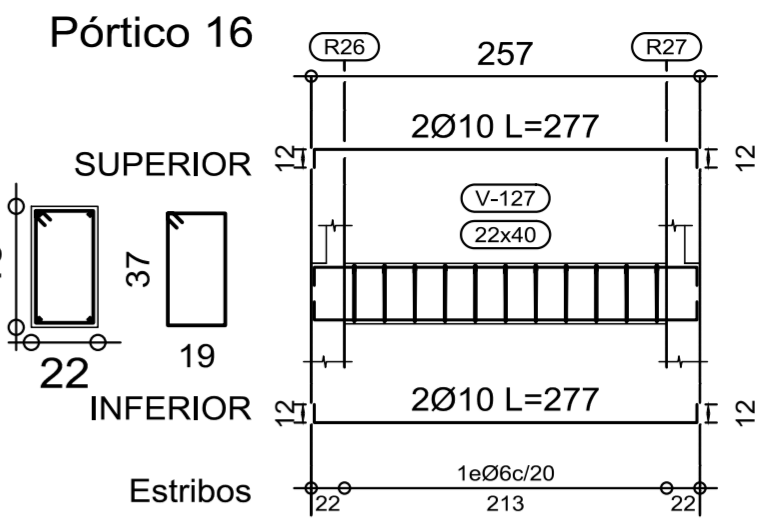
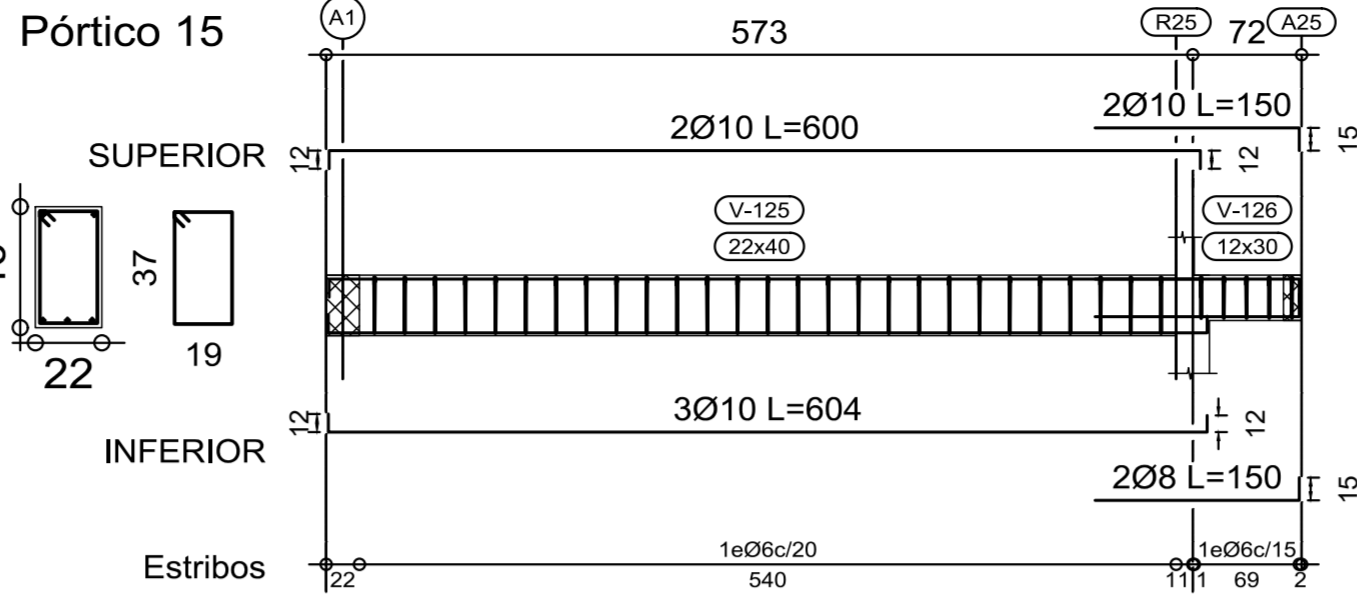
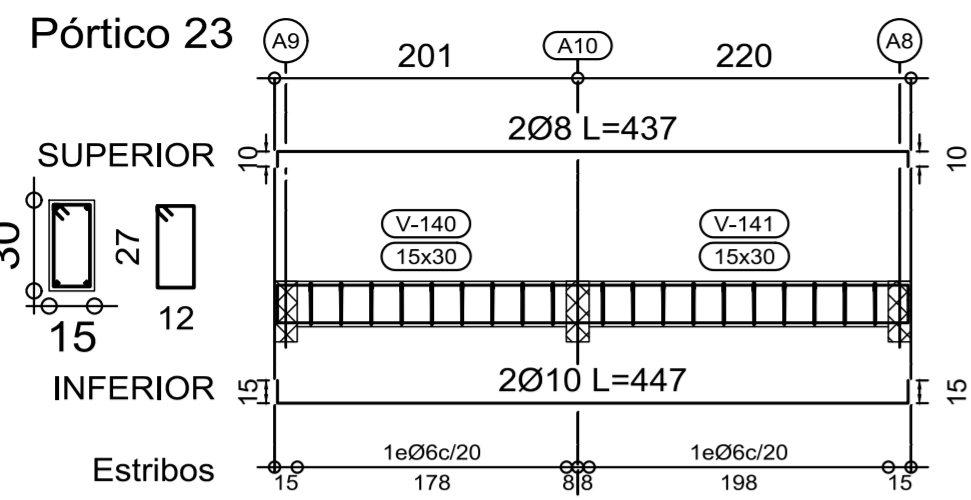


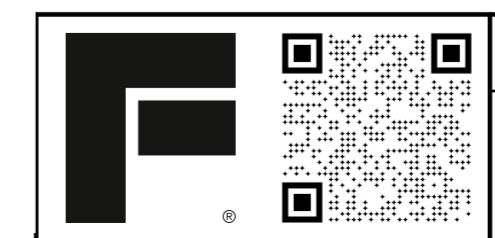
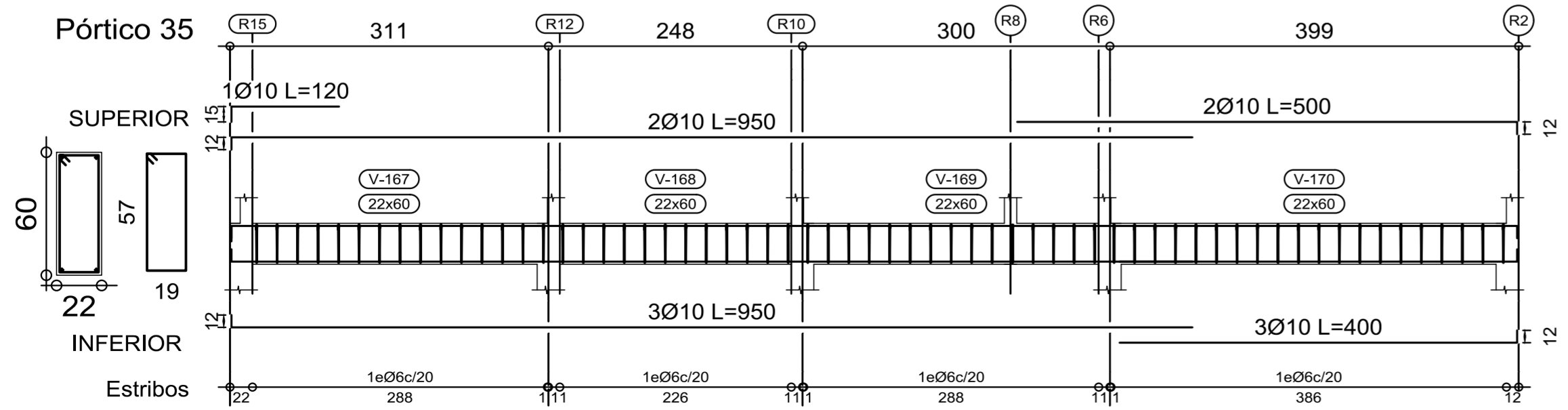
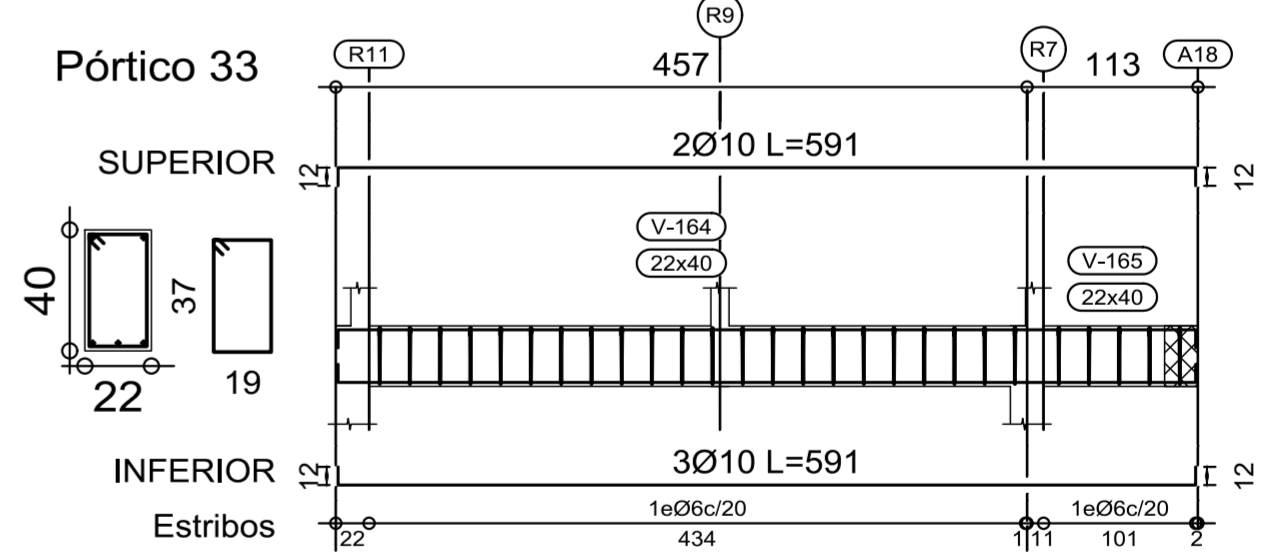
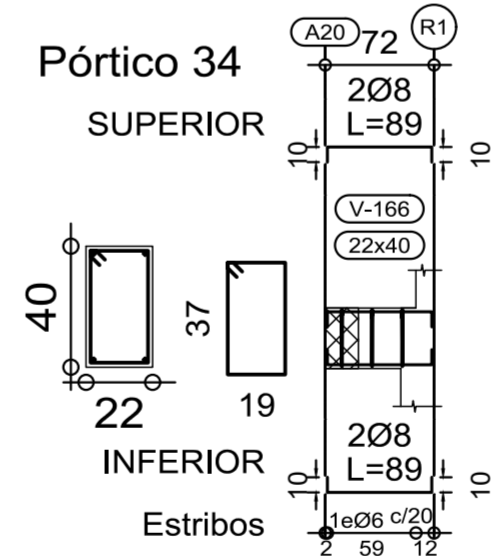
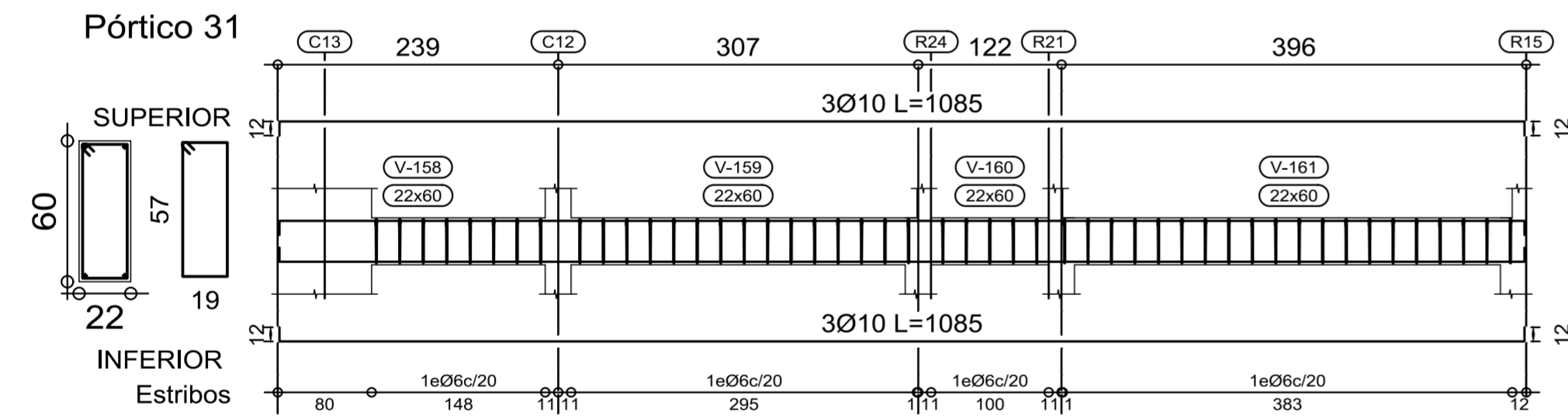
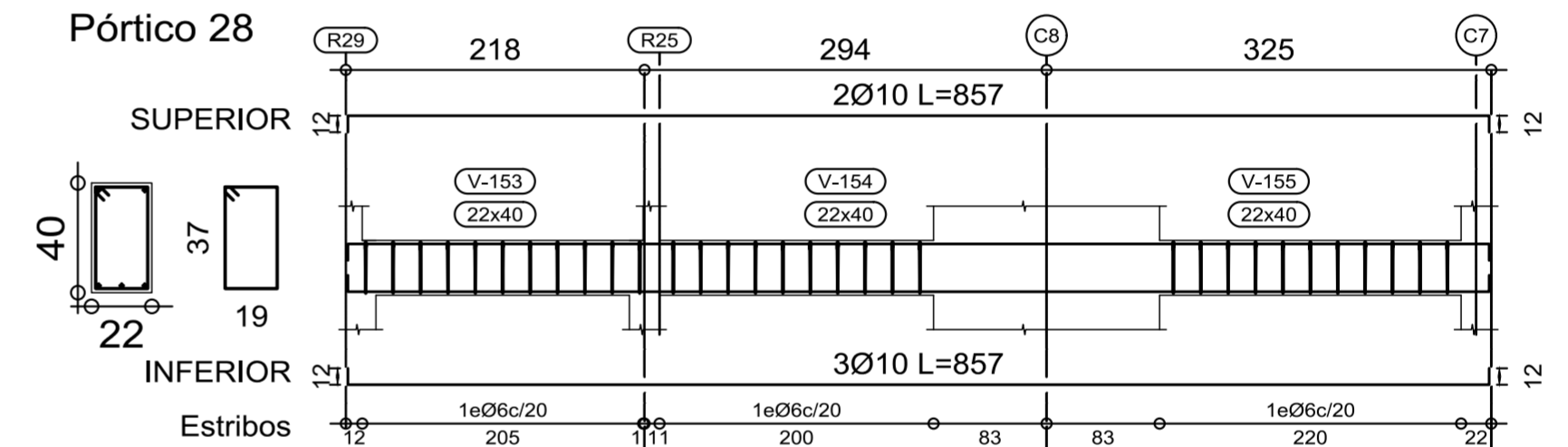
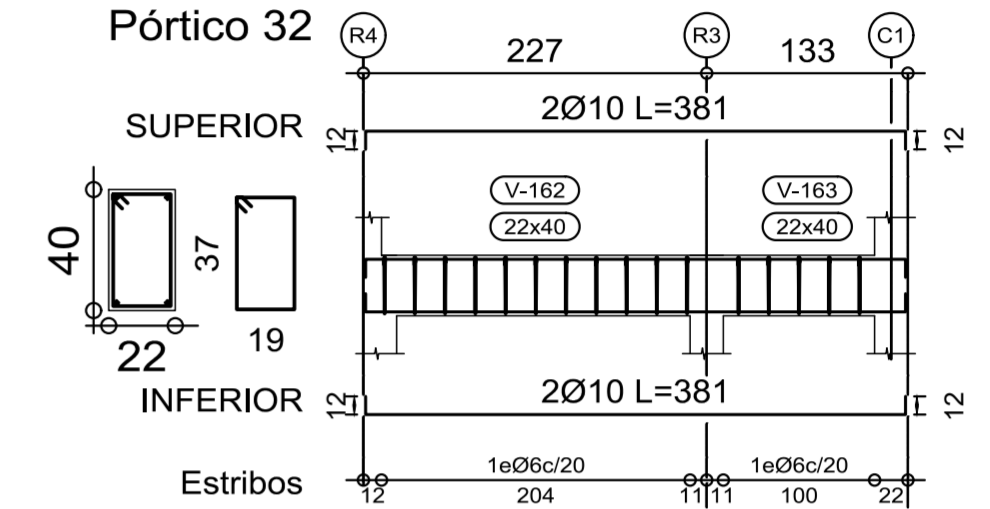
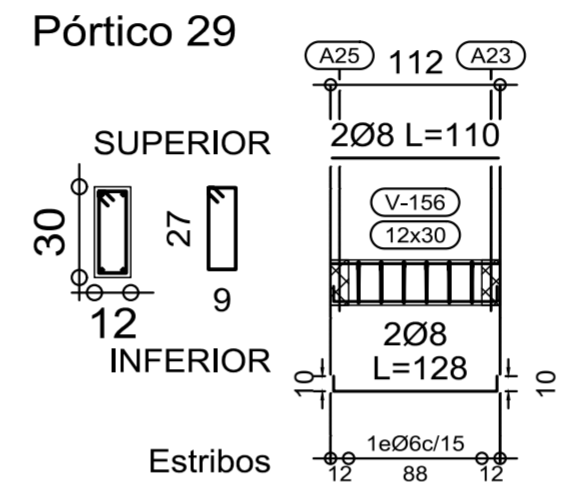
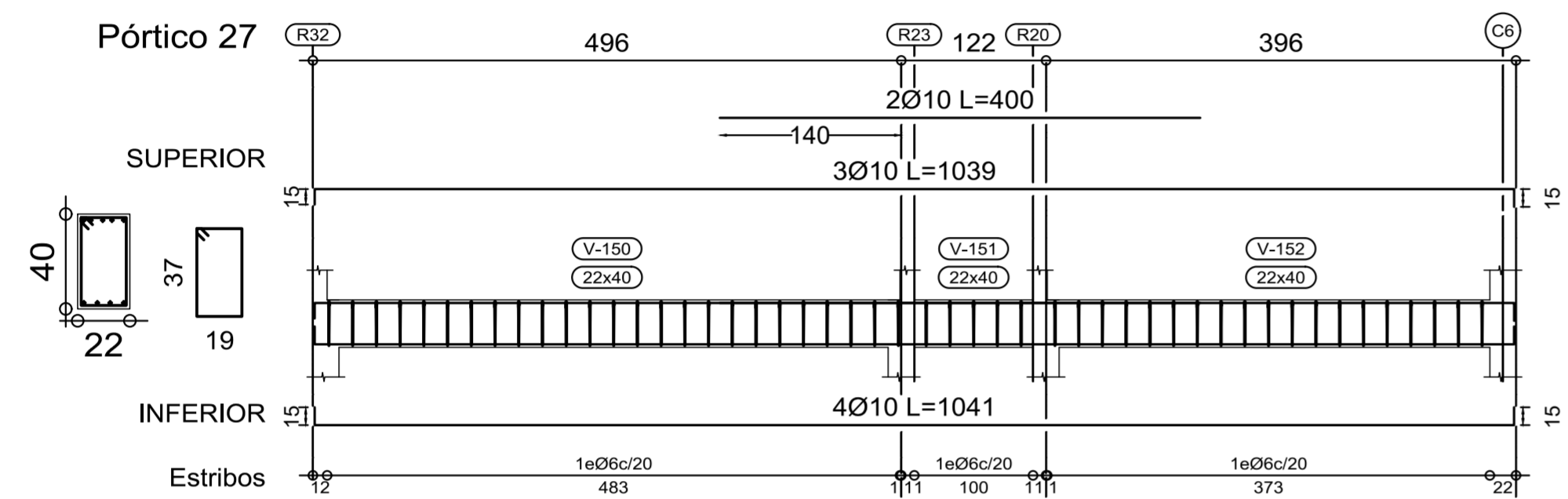
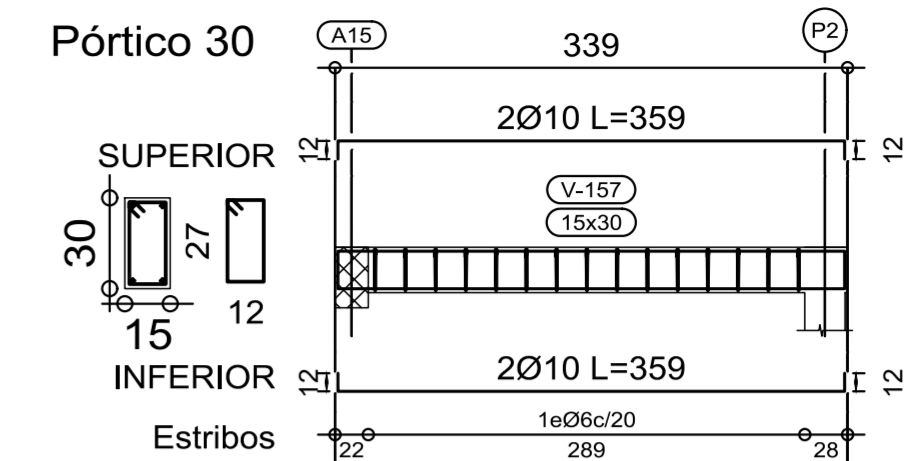
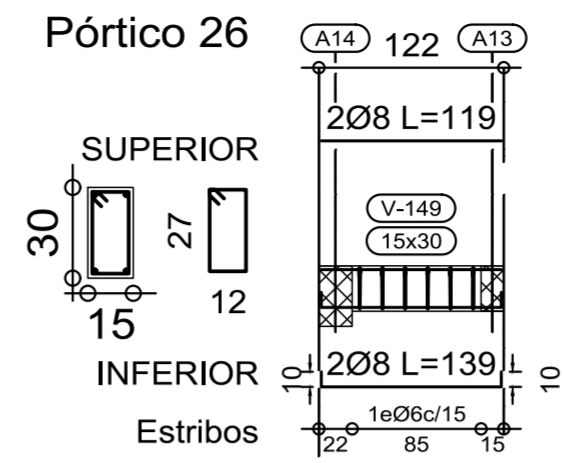
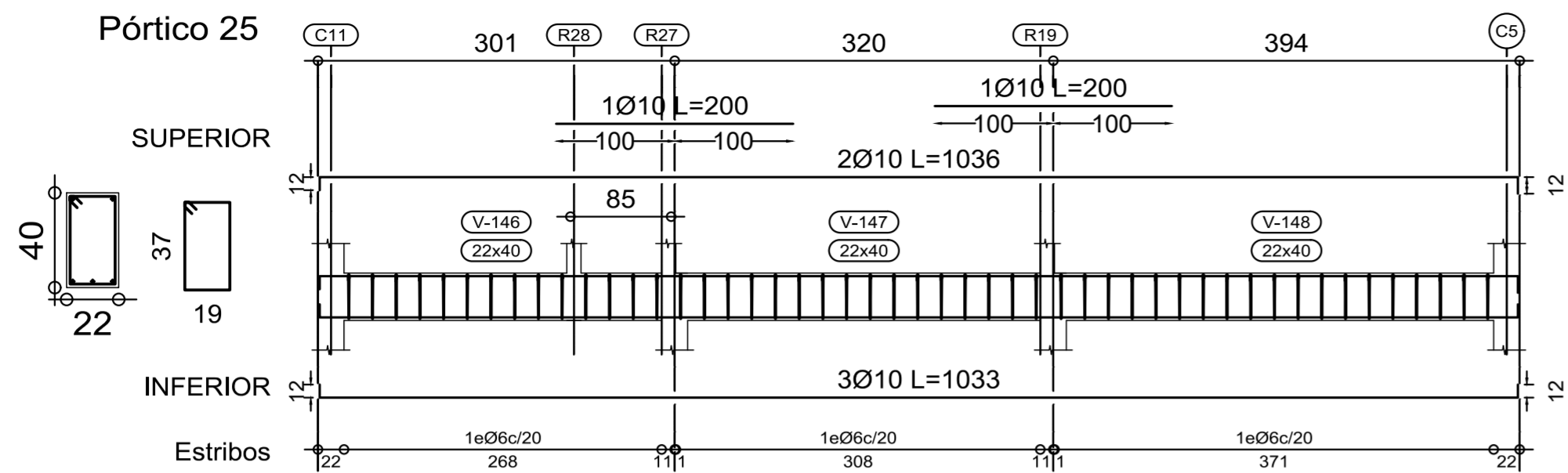
E.3
 OBRA: Casa en La arbolada
 Estructura S/PB
 CONTRASEÑA: la32
 ESCALA: 1:1
 FECHA: 07/09/2022

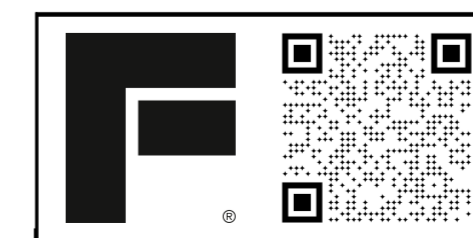
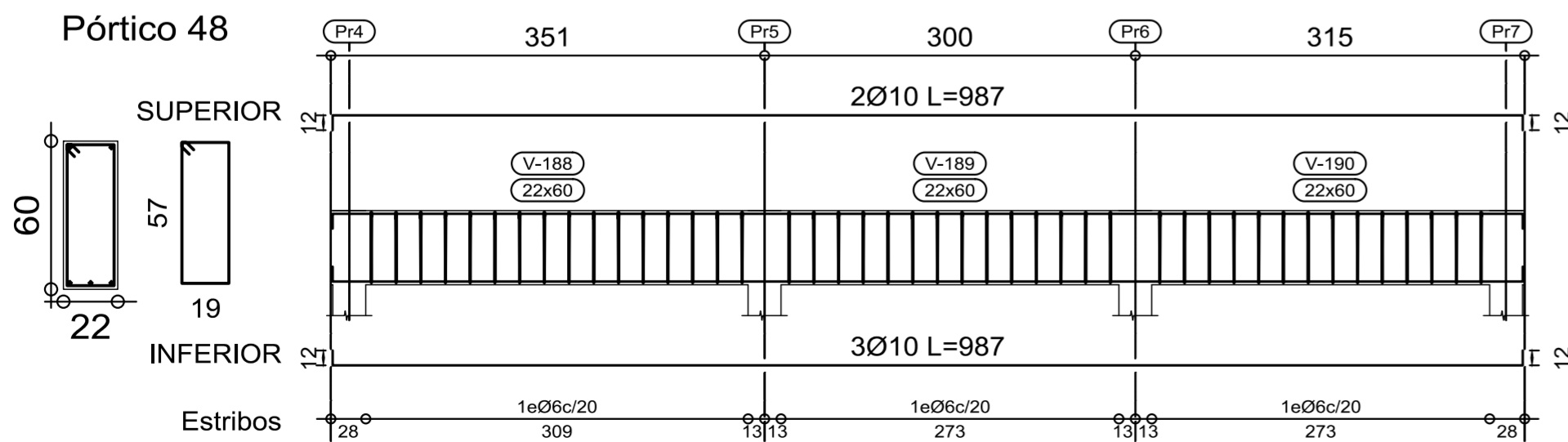
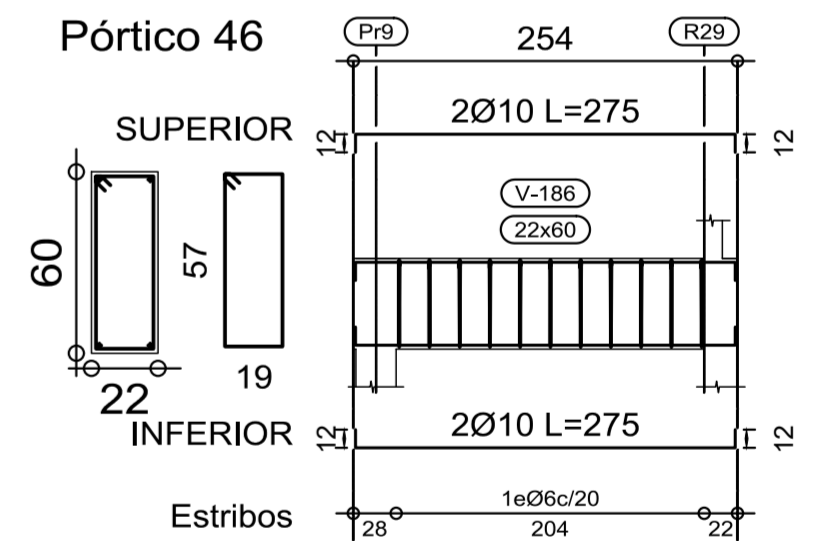
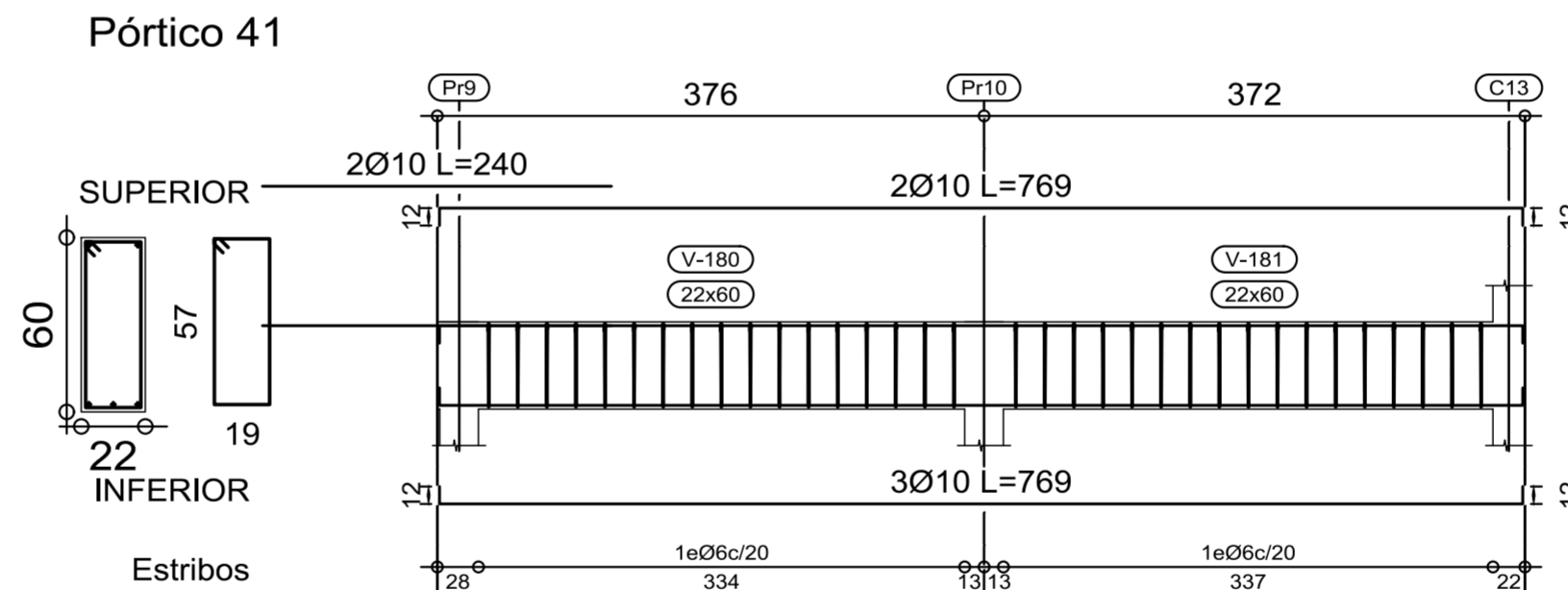
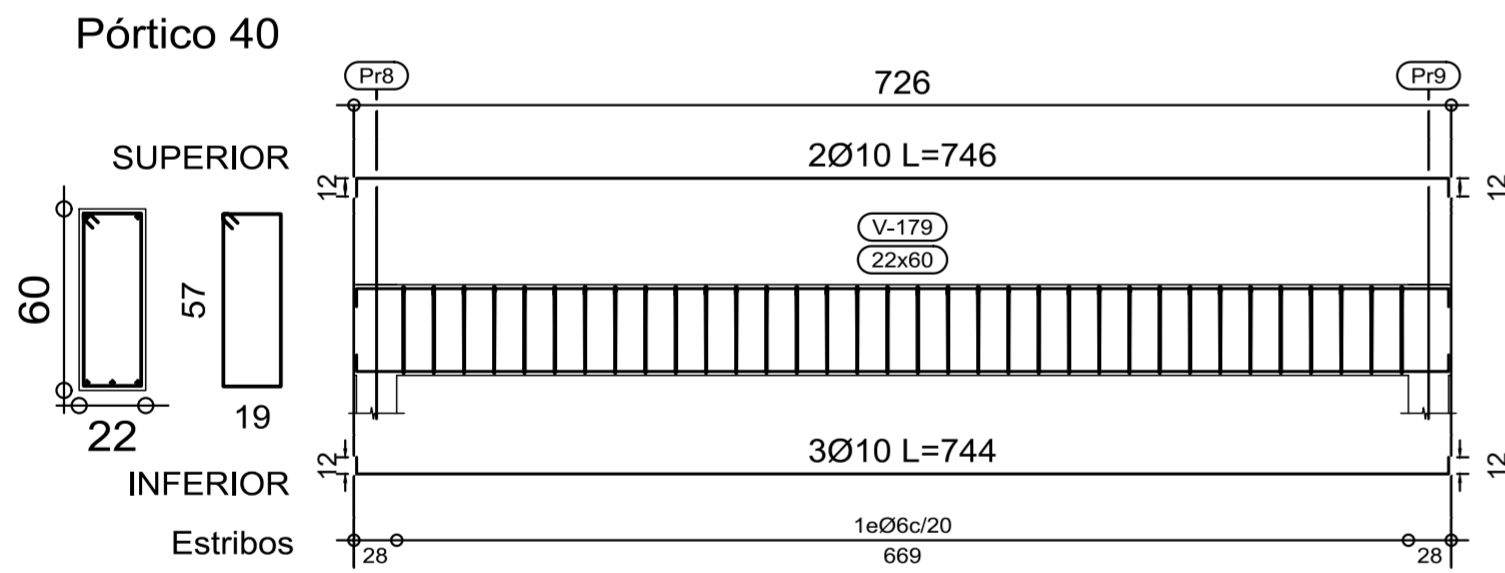
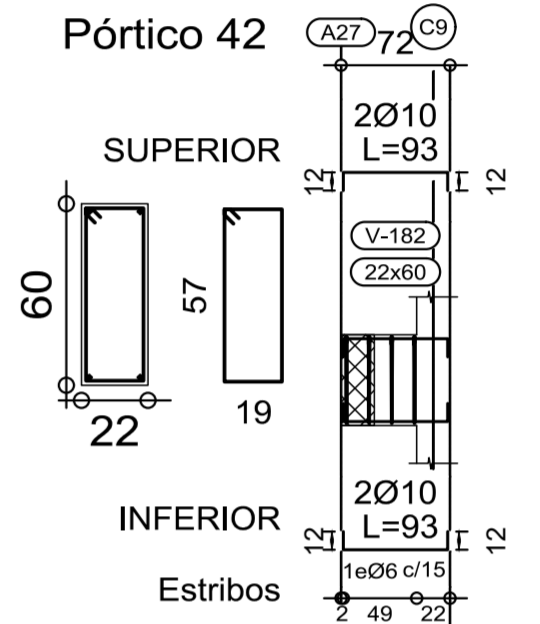
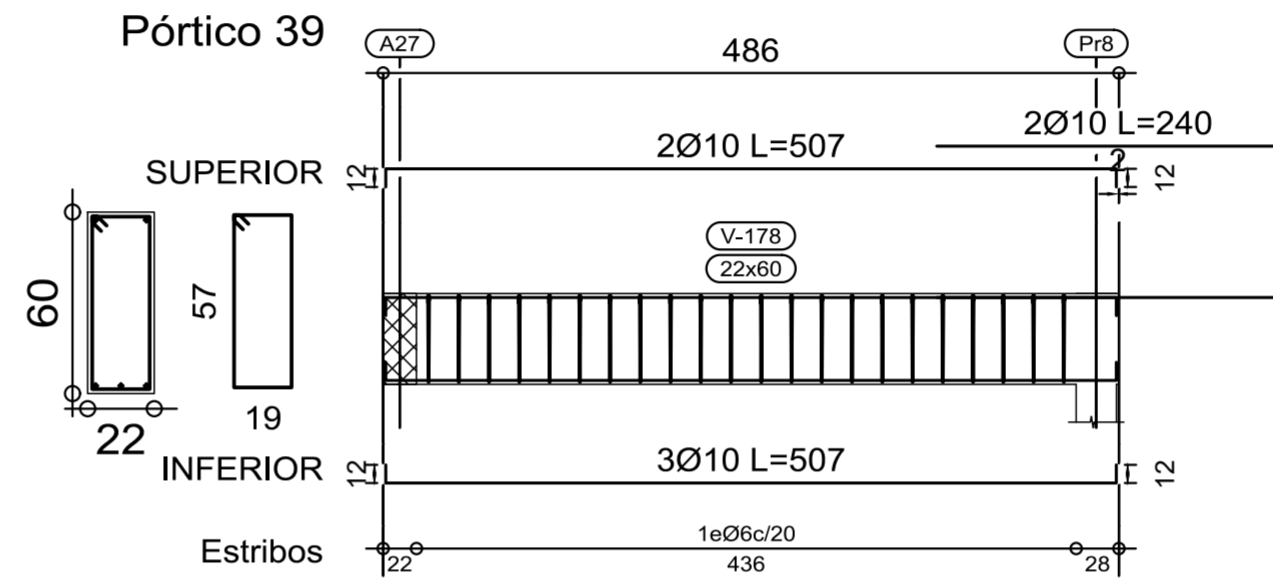
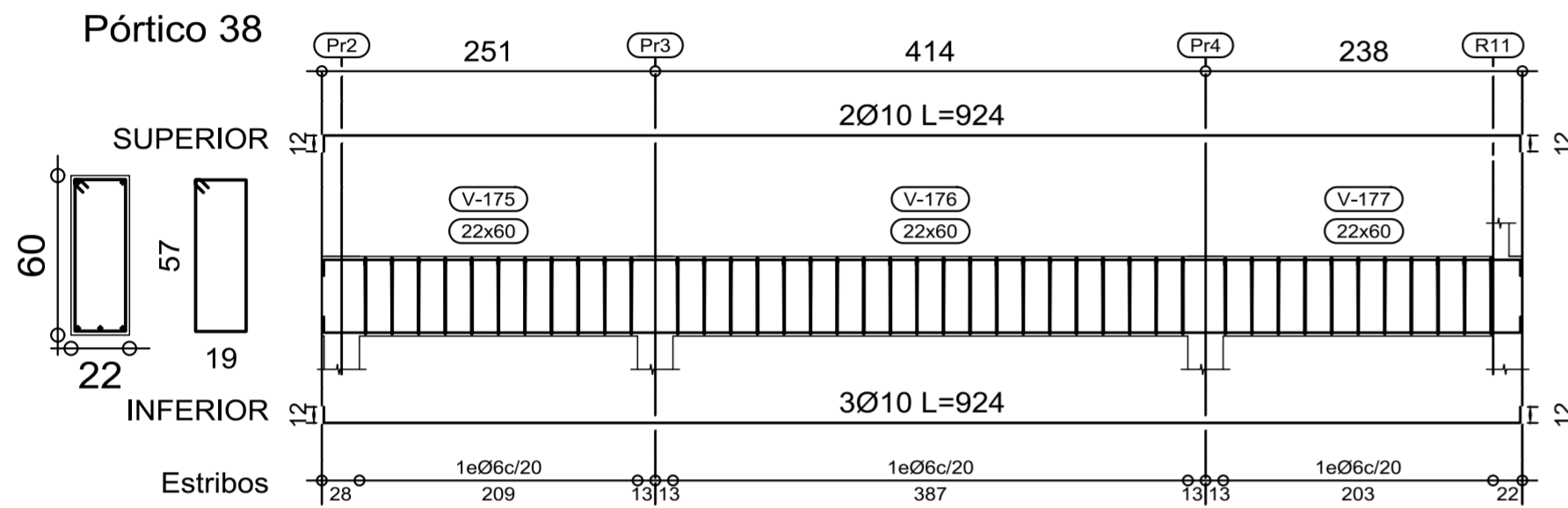
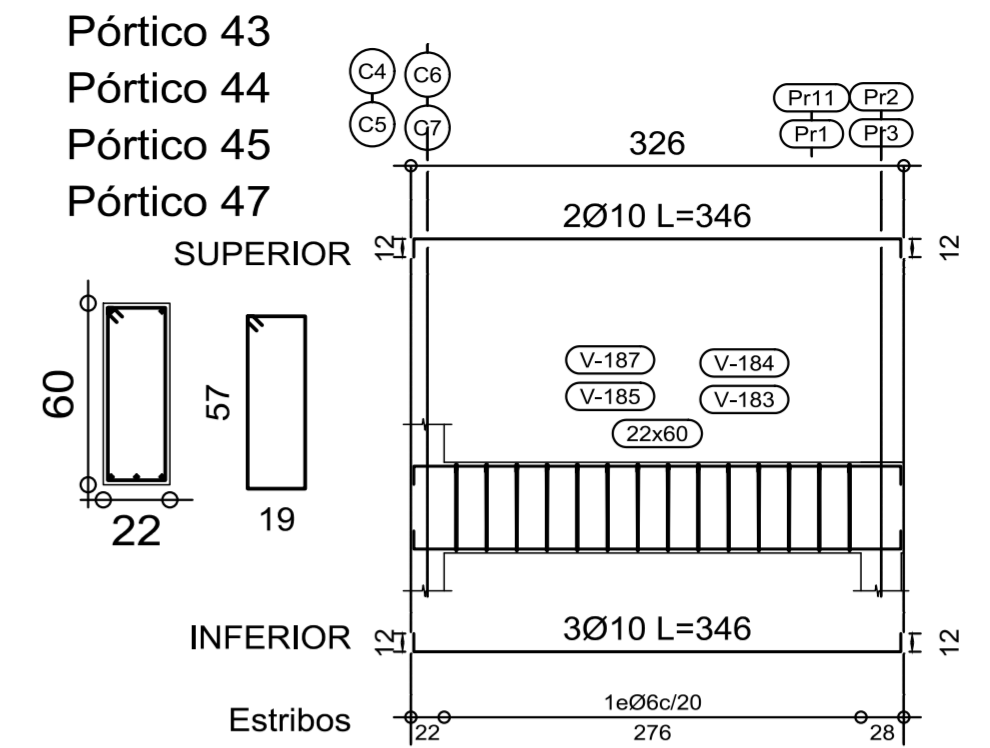
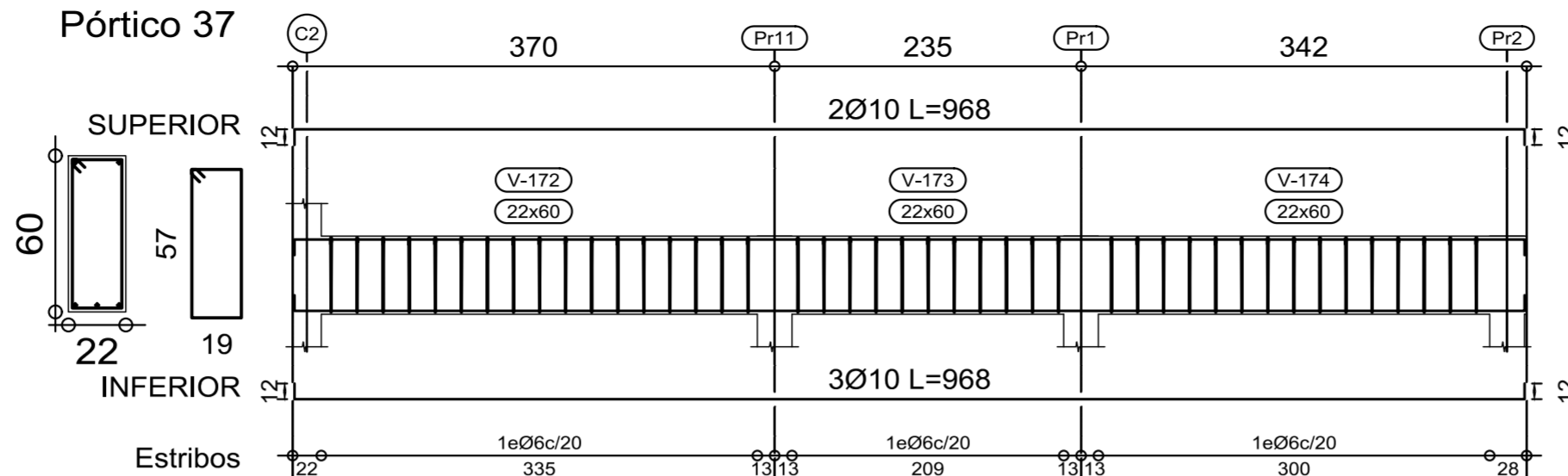
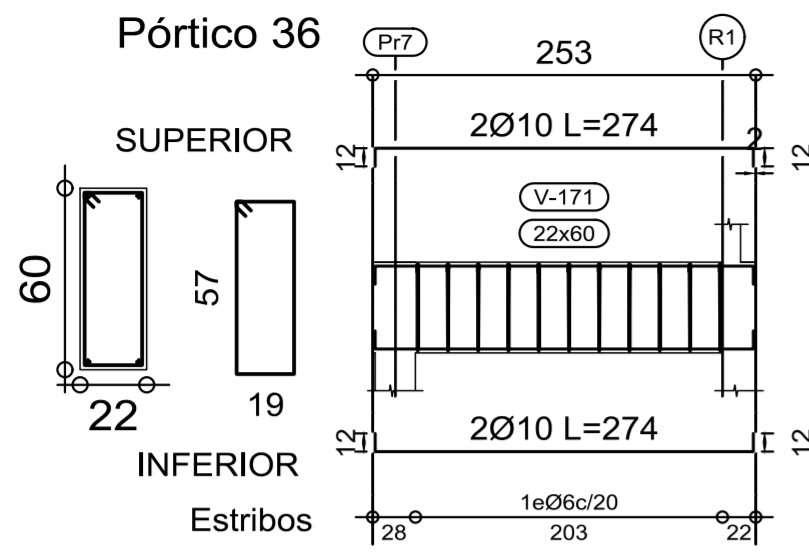


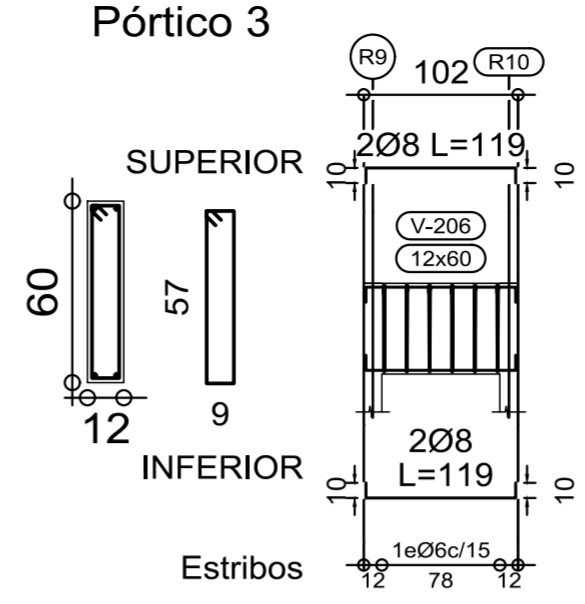
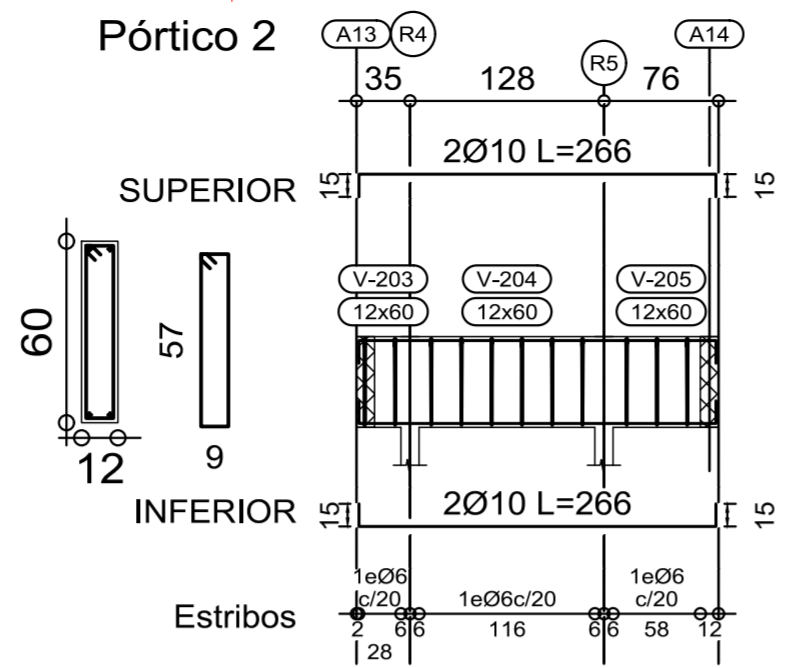
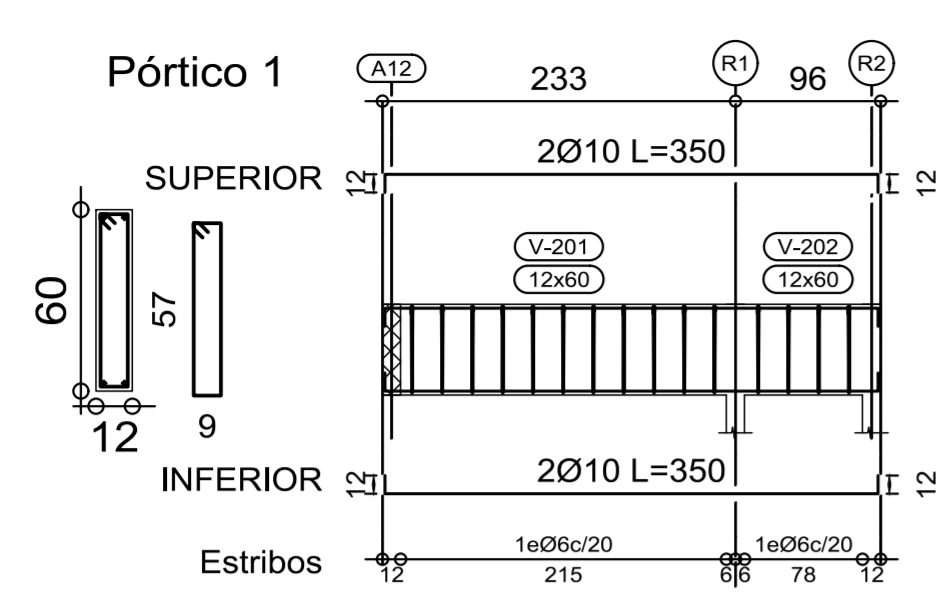
Resumen Acero	Long. total (m)
VF Vigas	
ADN-420 Ø6	1493.7
Ø8	130
Ø10	1180
Ø12	54.4



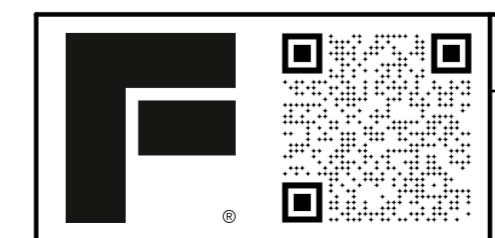
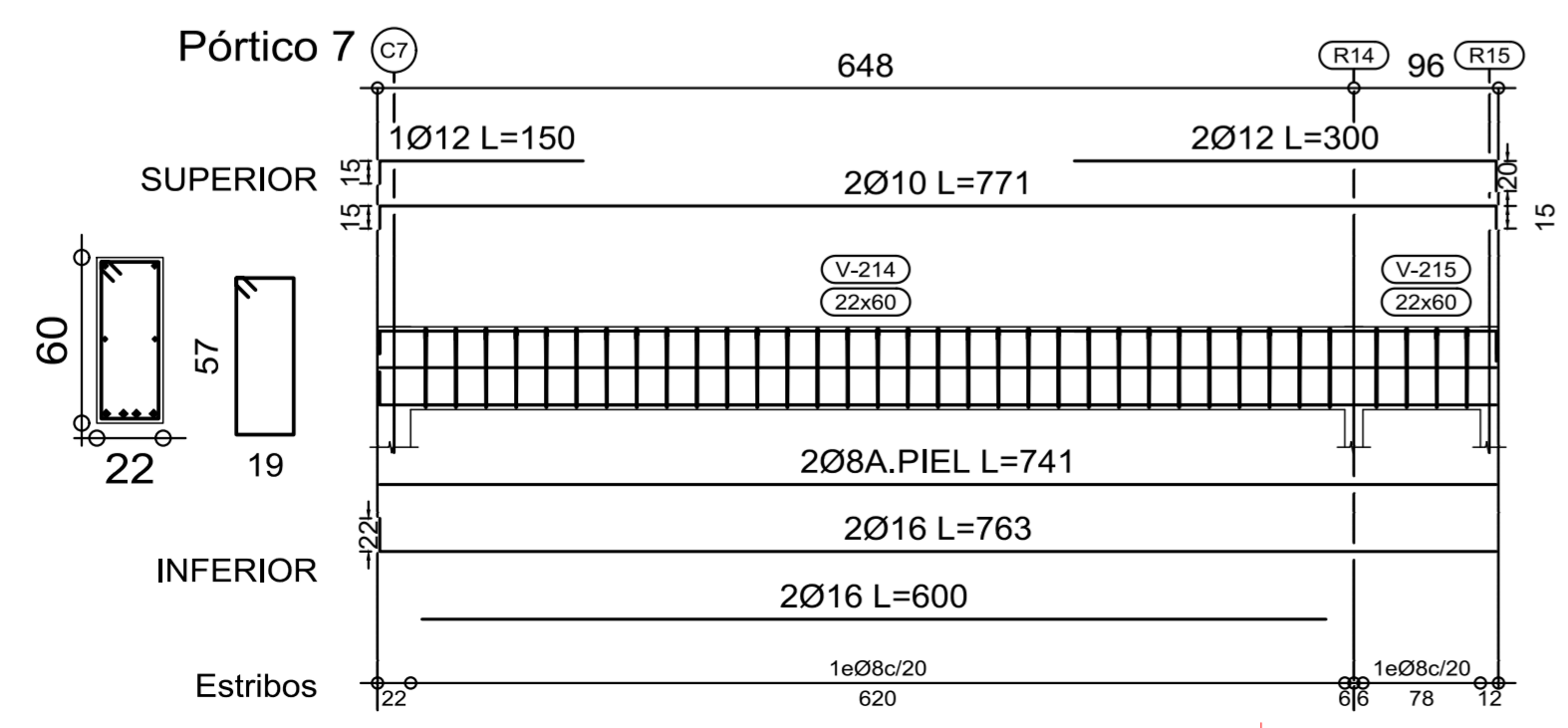
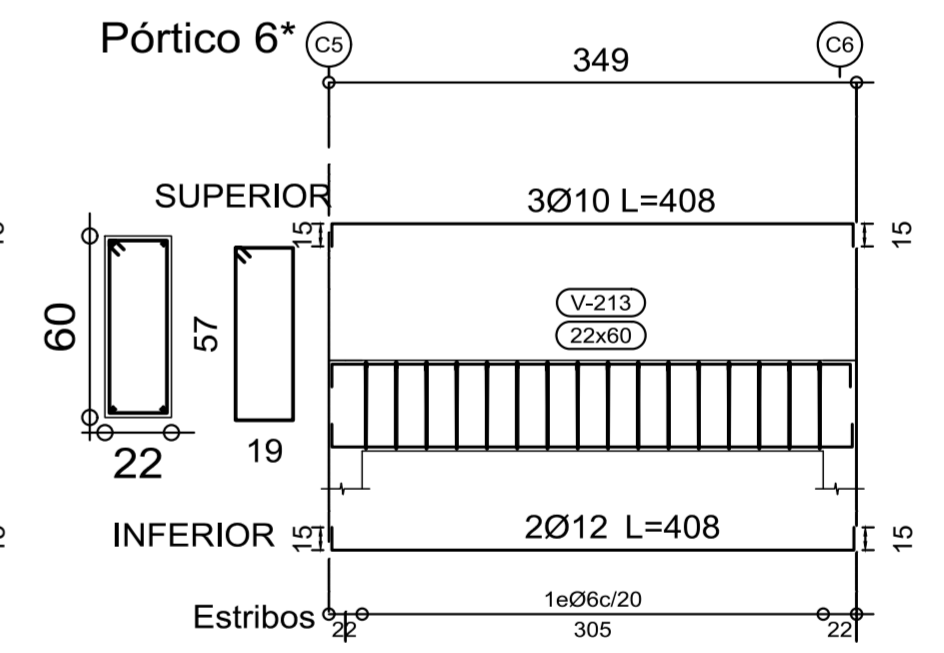
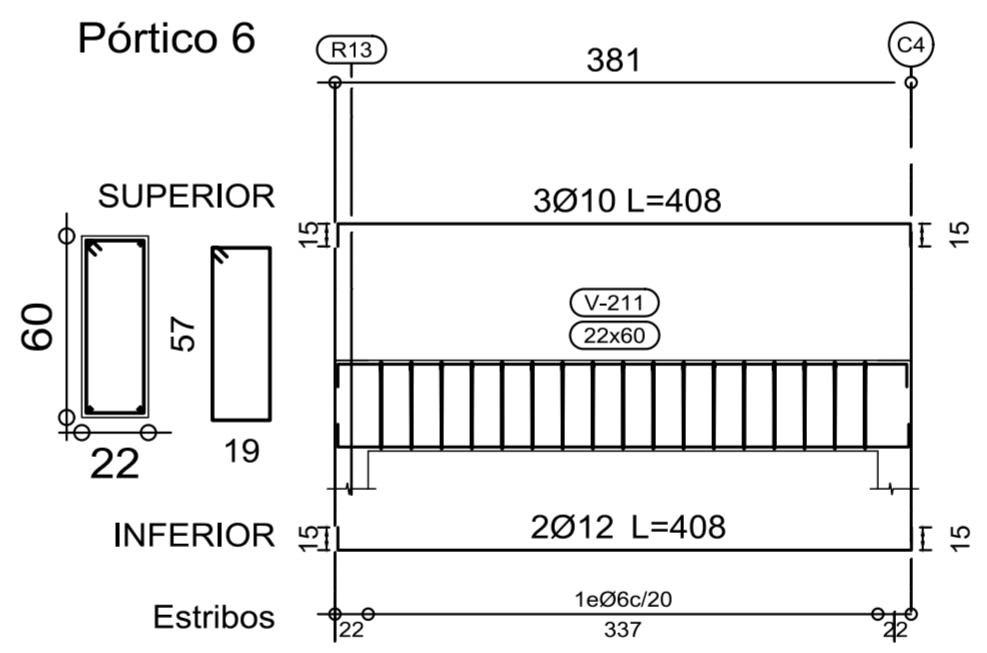
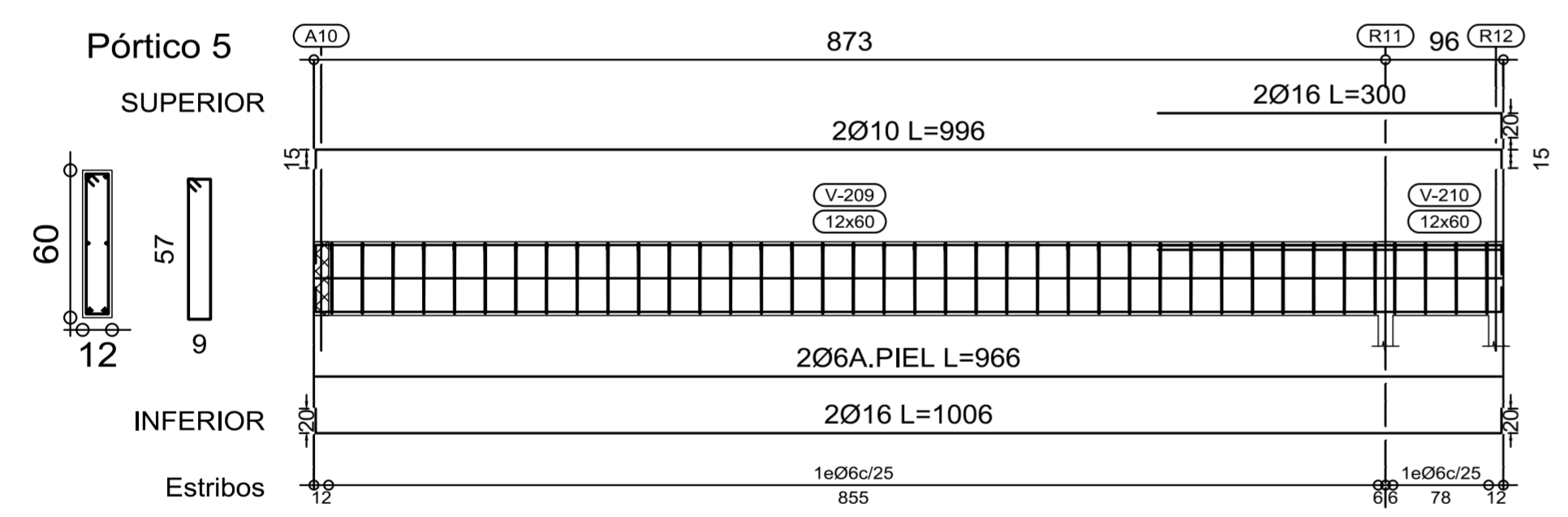
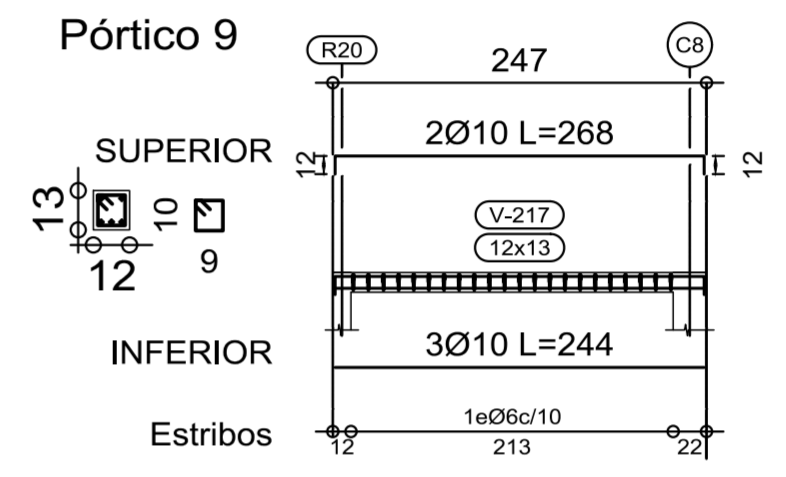
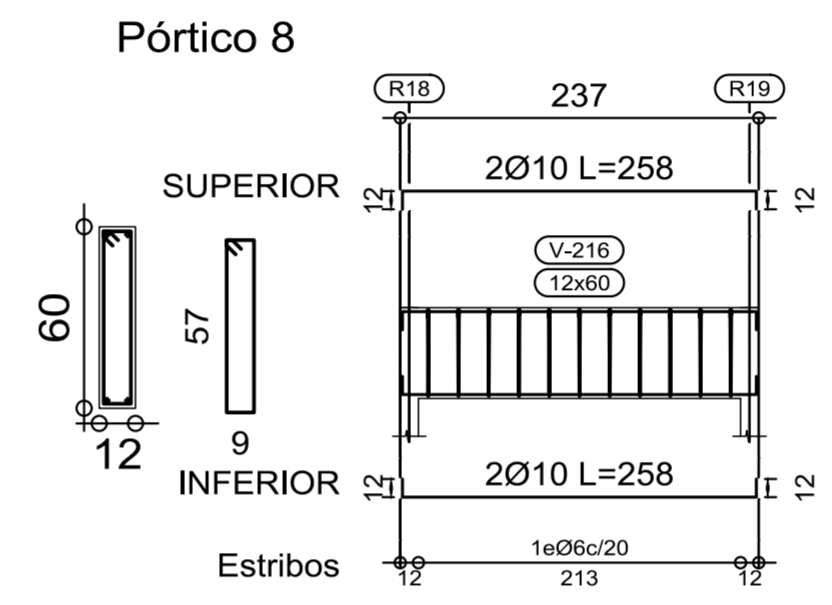
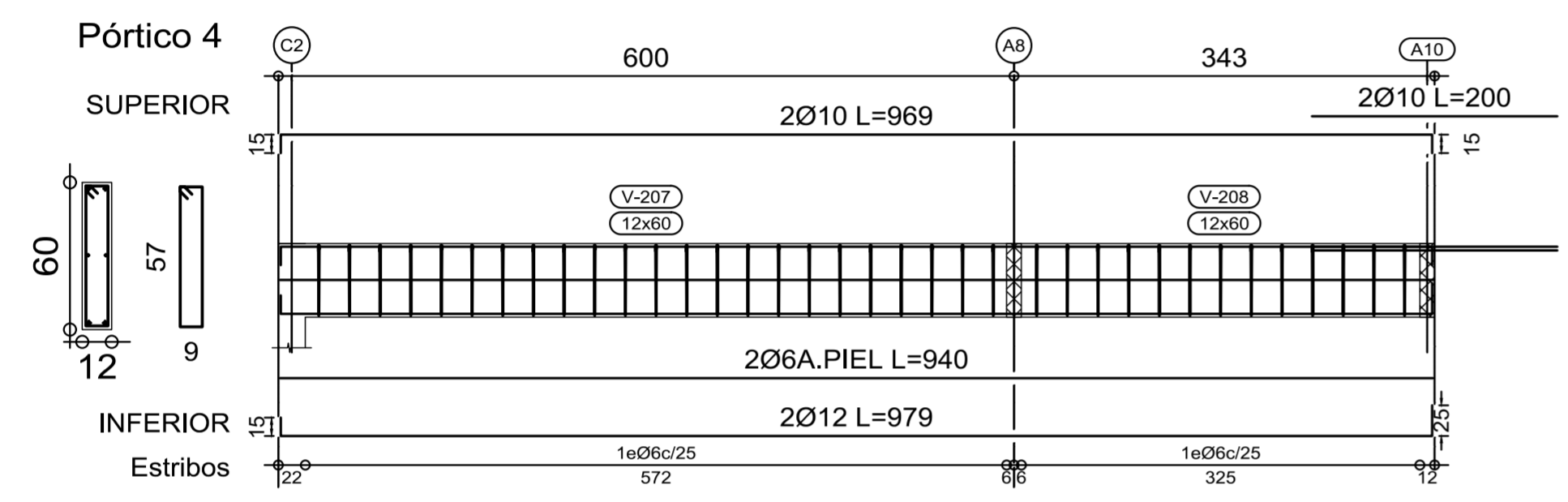




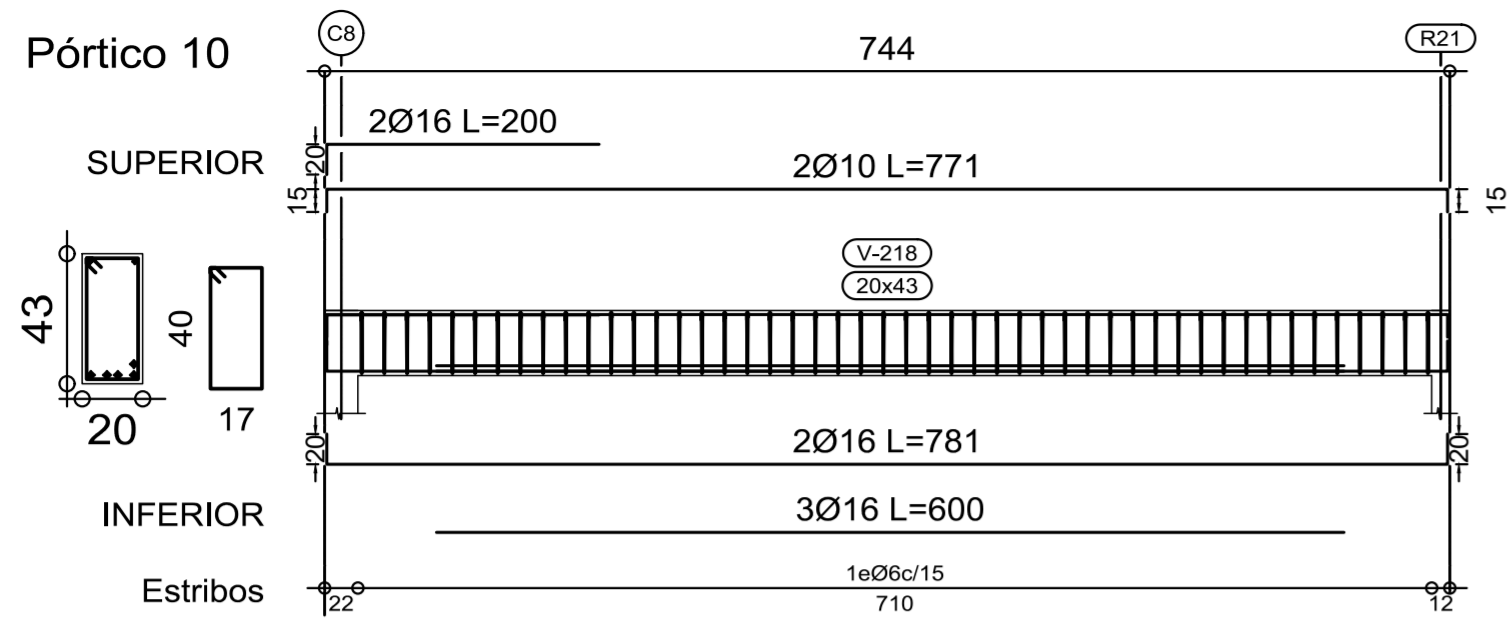




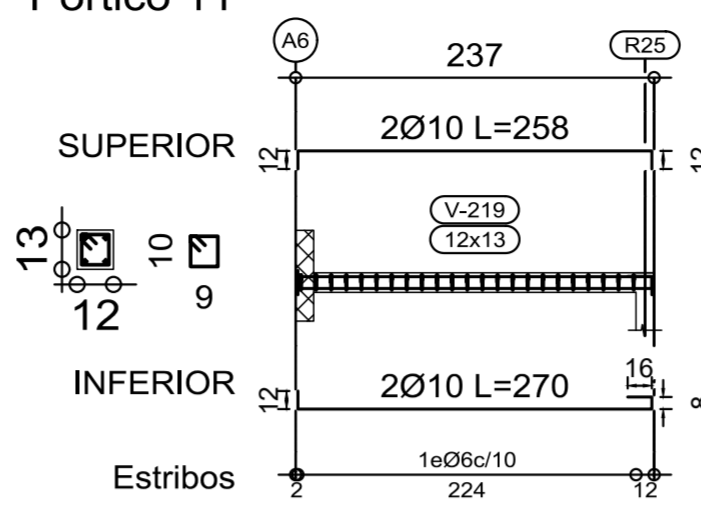
Resumen Acero S/PB Vigas	Long. total (m)
ADN-420 Ø6	1536.4
Ø8	121.8
Ø10	518.7
Ø12	330.8
Ø16	180.2



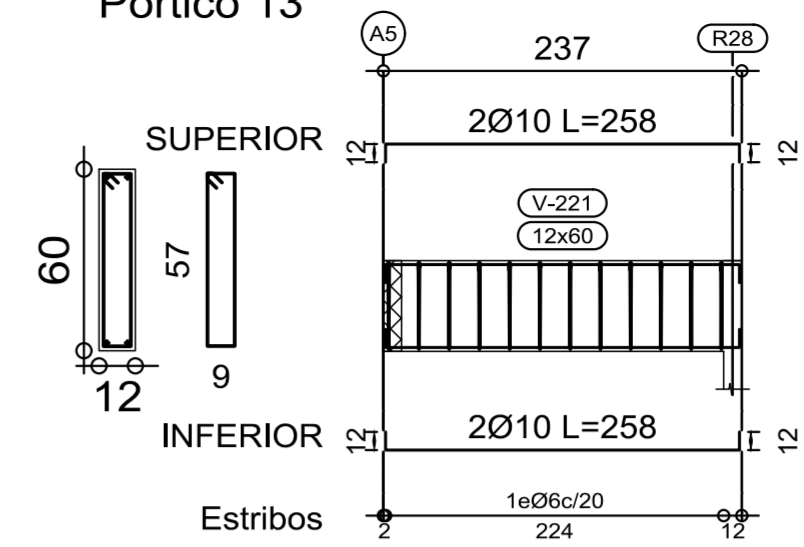
Pórtico 10



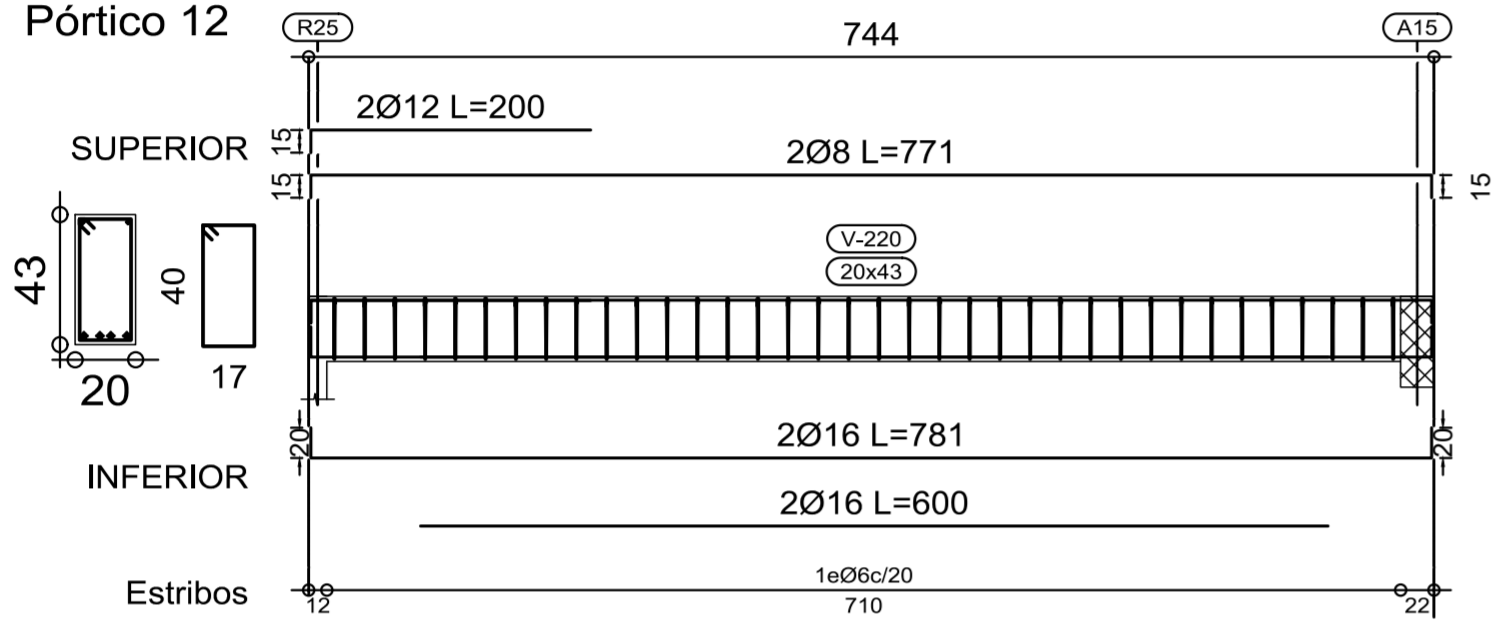
Pórtico 11



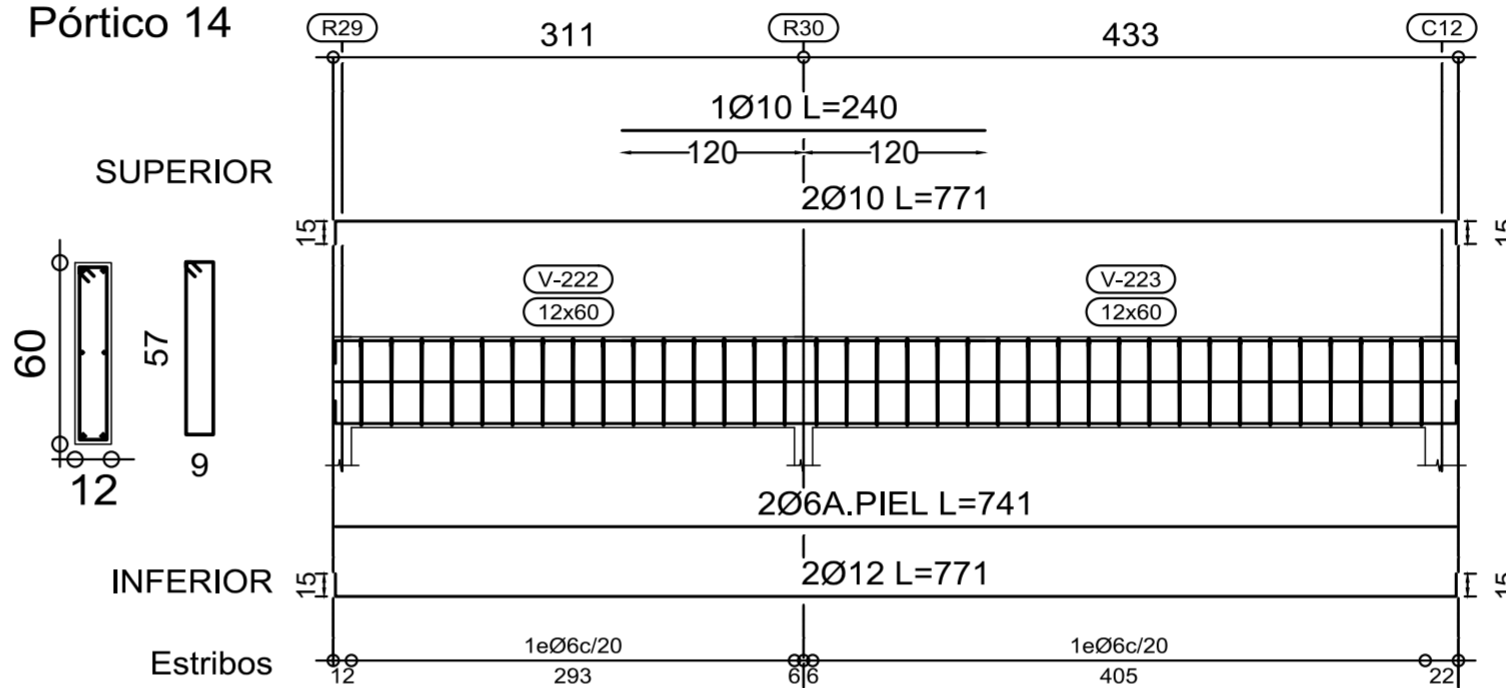
Pórtico 13



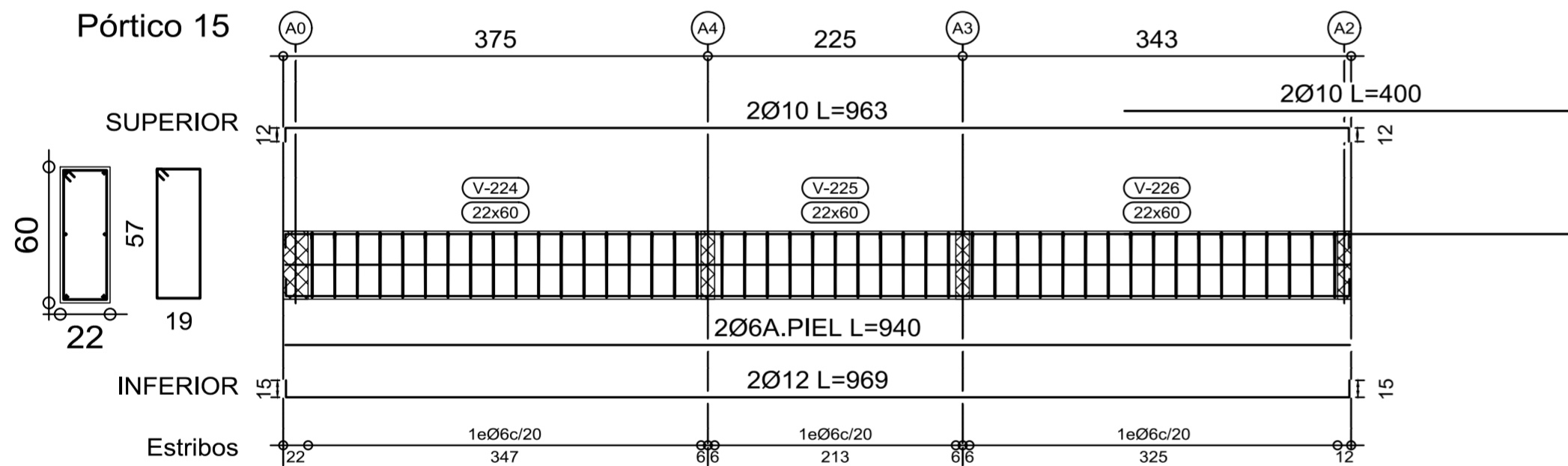
Pórtico 12



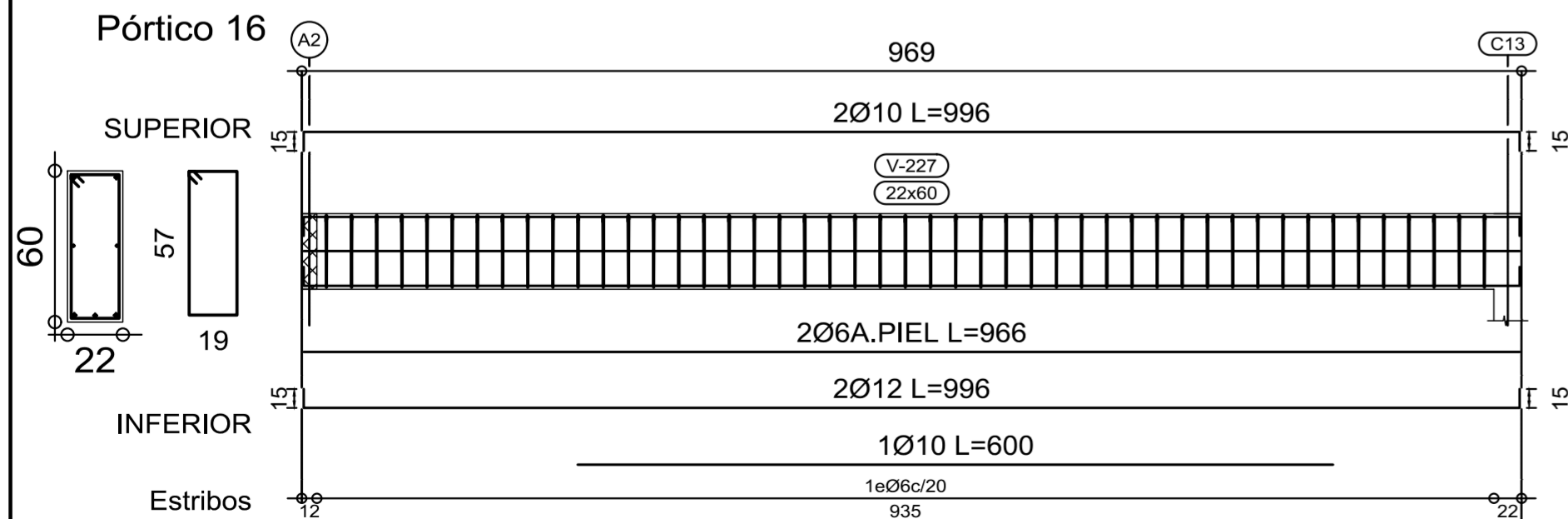
Pórtico 14



Pórtico 15



Pórtico 16

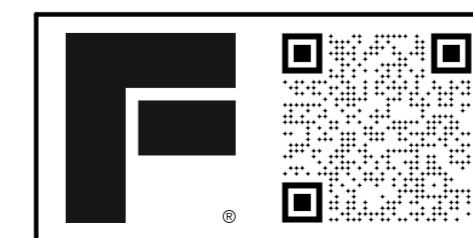
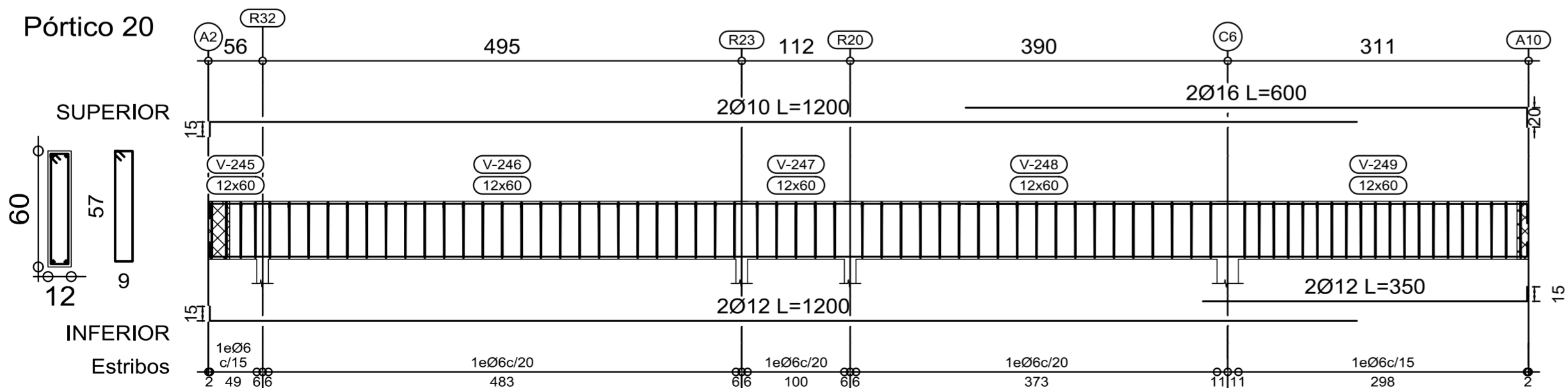
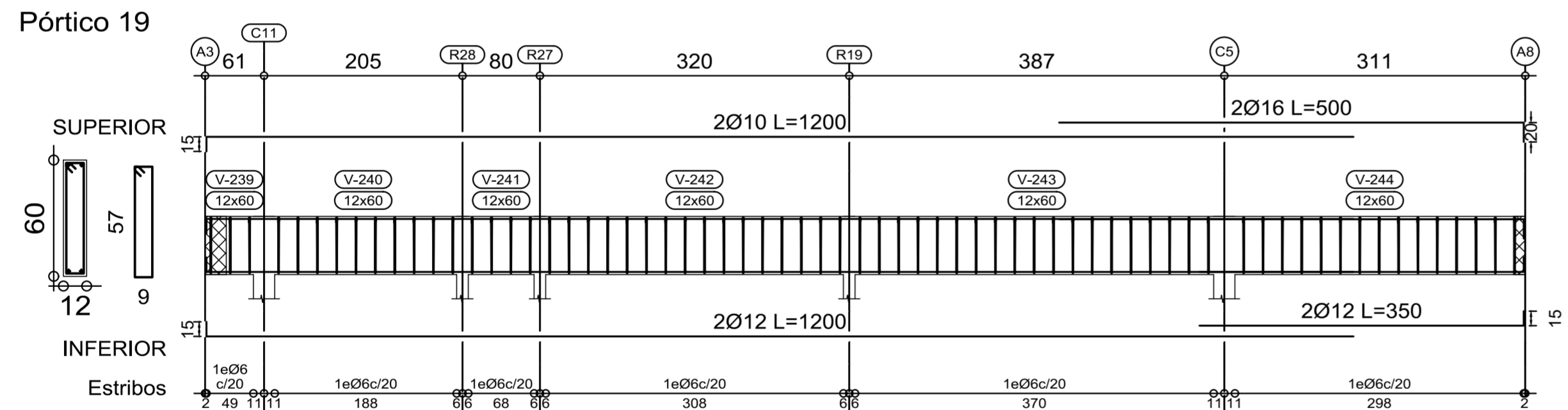
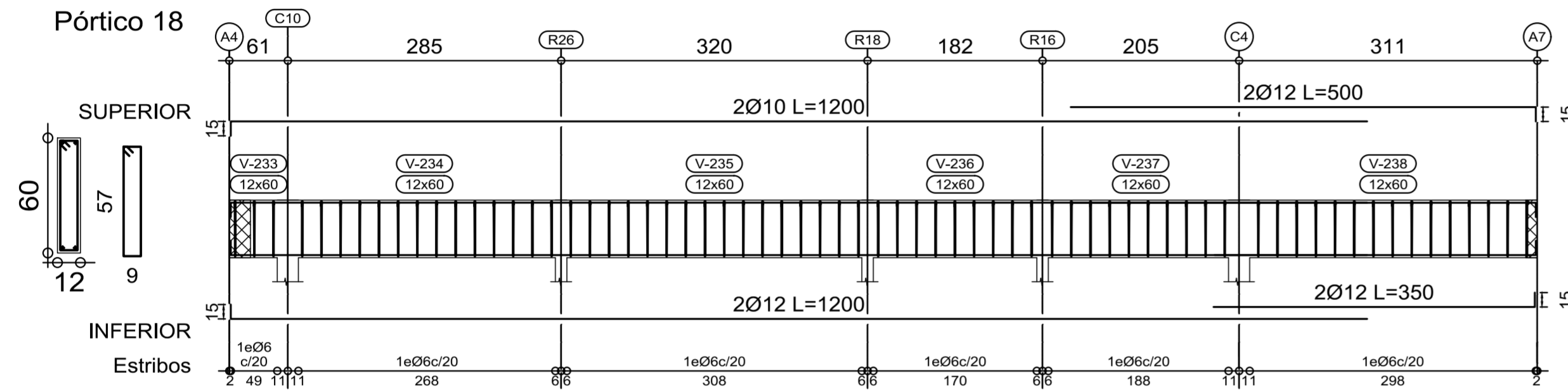
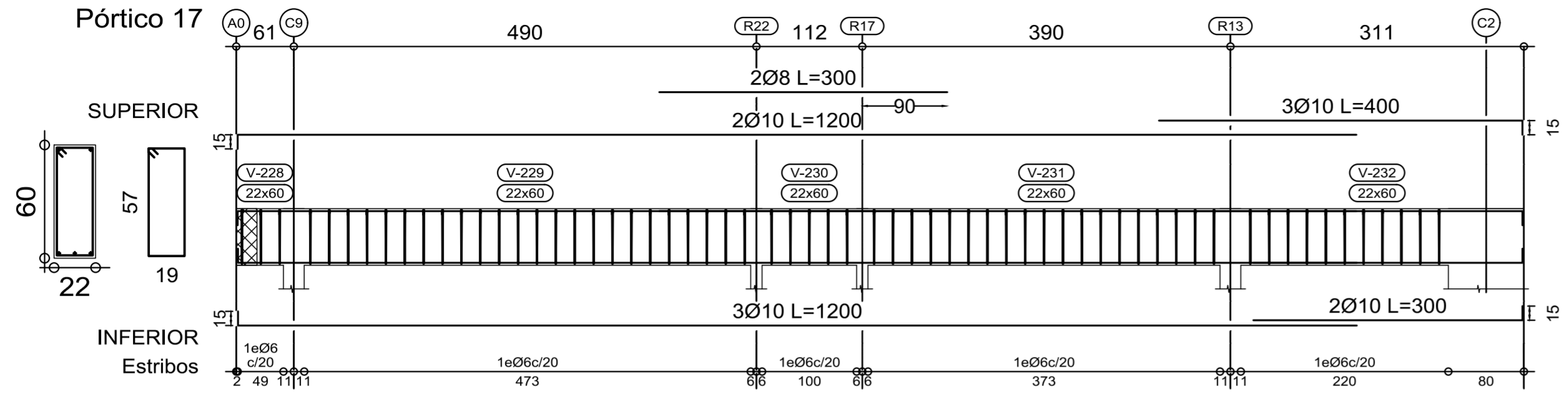


E.9

OBRA: Casa en La arbolada
Estructura S/PB - Despiece vigas

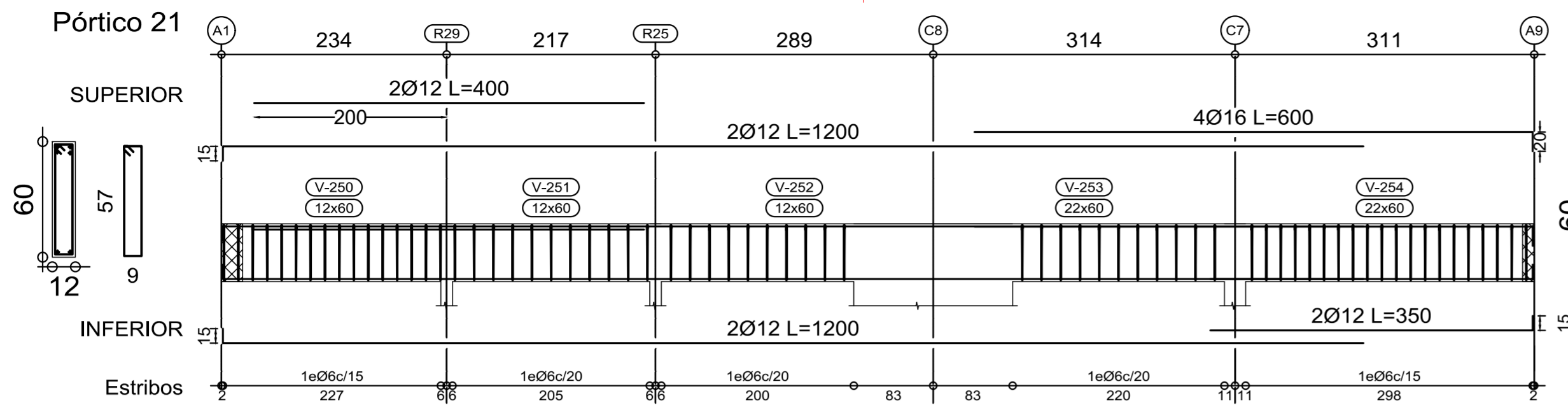
CONTRASEÑA: la32

ESCALA: 1:1
FECHA: 07/09/2022

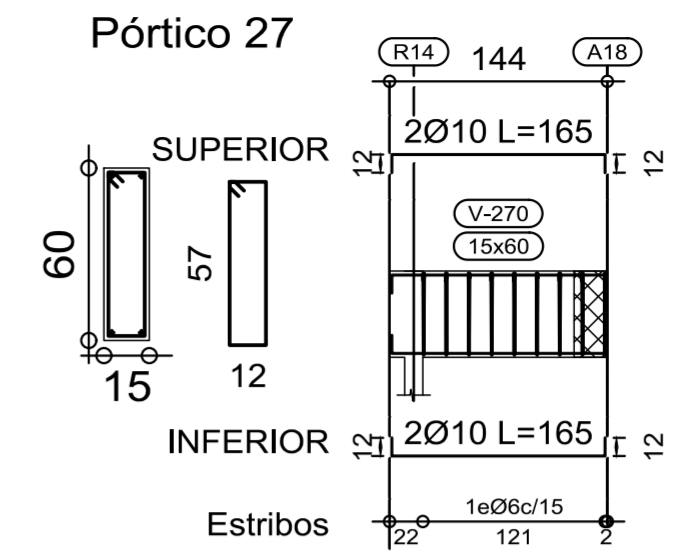


E.10
 OBRA: Casa en La arbolada
 Estructura S/PB - Despiece vigas
 CONTRASEÑA: Ia32
 ESCALA: 1:1
 FECHA: 07/09/2022

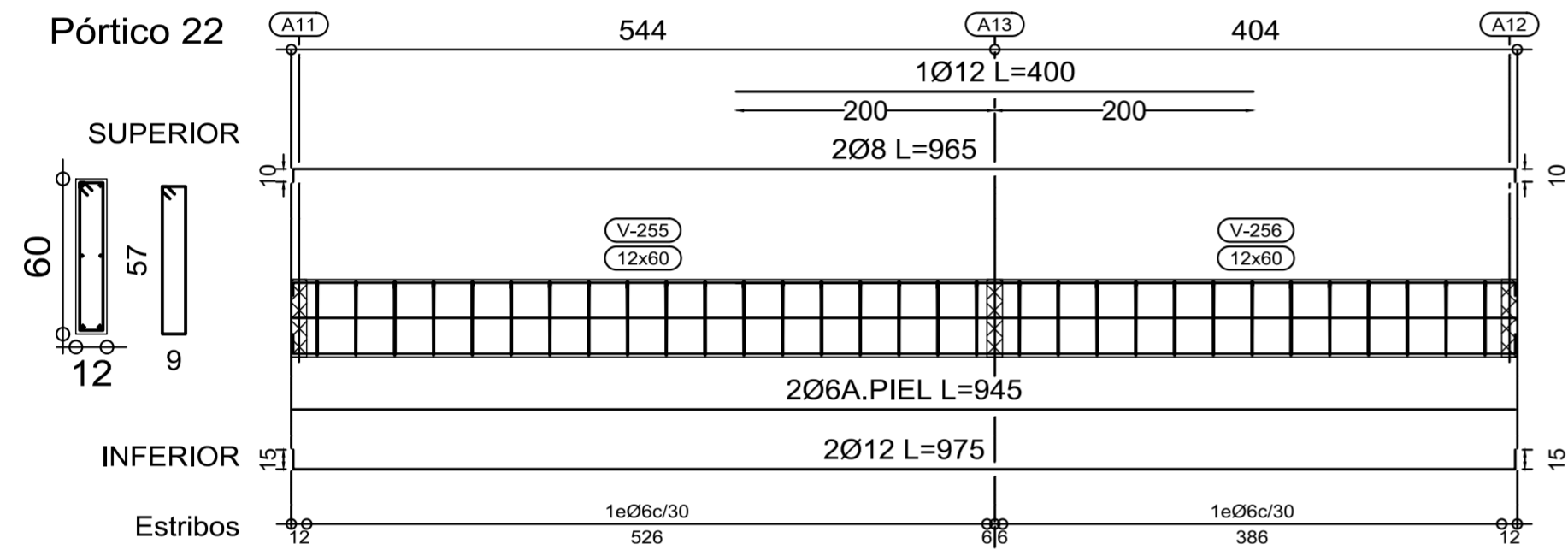
Pórtico 21



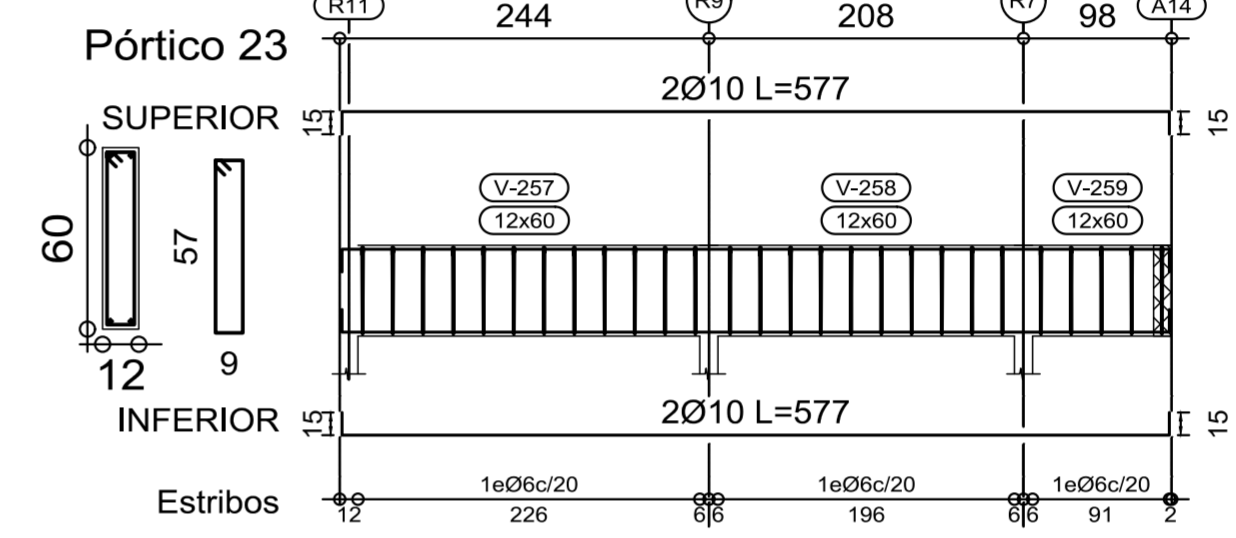
Pórtico 27



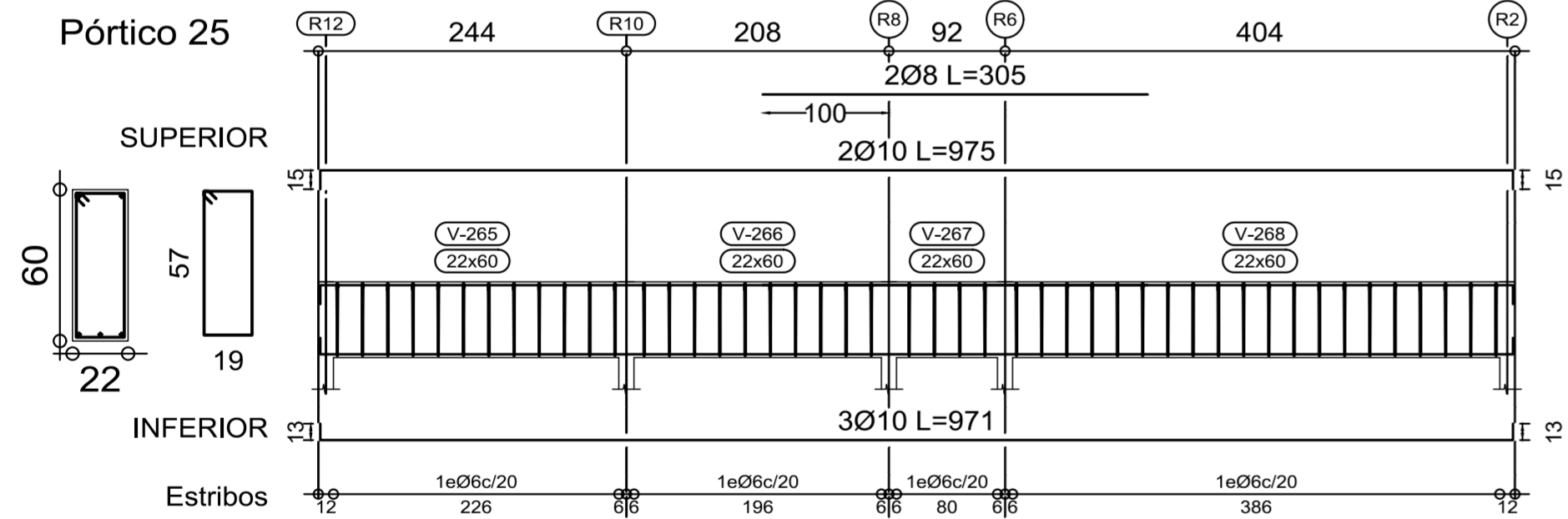
Pórtico 22



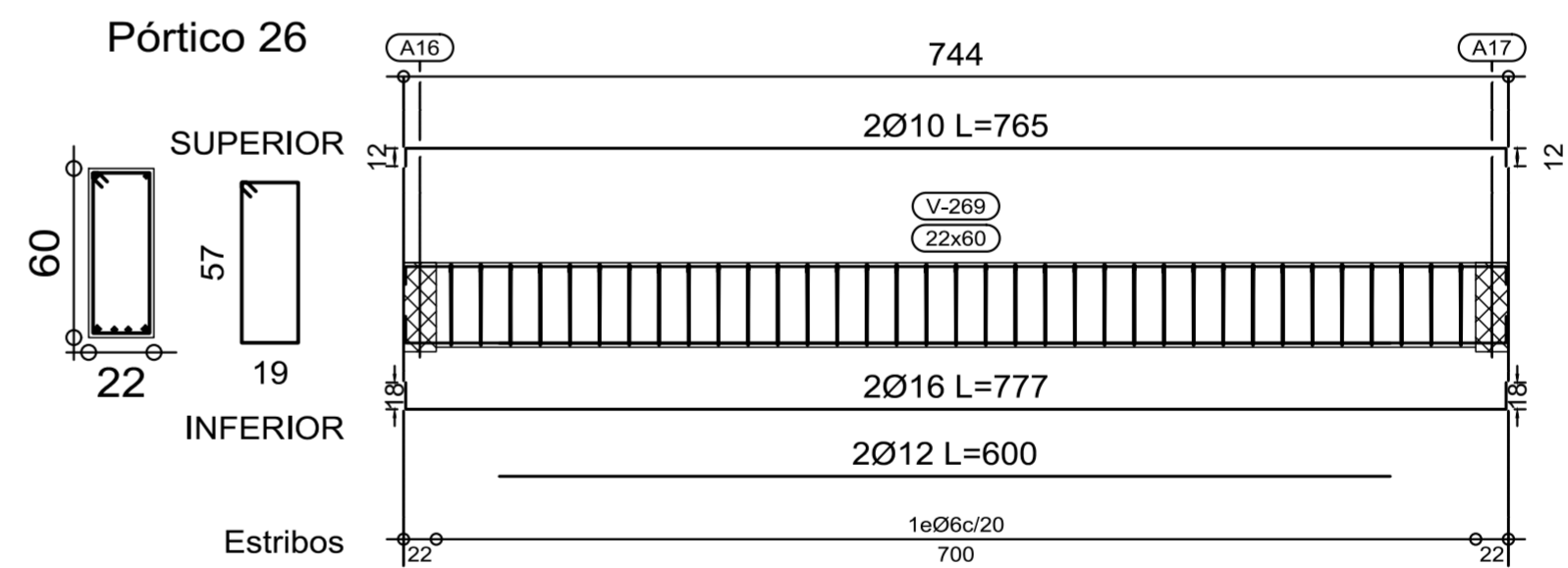
Pórtico 23



Pórtico 25



Pórtico 26



Pórtico 24

